

AGENDA

Meeting: SOUTH WEST WILTSHIRE AREA BOARD

Place: Nadder Centre, Tisbury

Date: Wednesday 8 March 2017

Time: 6.30 pm

Including the Parishes of Alvediston, Ansty, Barford St. Martin, Berwick St John, Berwick St Leonard, Bishopstone, Bowerchalke, Broad Chalke, Burcombe Without, Chicklade, Chilmark, Compton Chamberlayne, Dinton, Donhead St Andrew, Donhead St Mary, East Knoyle, Ebbesbourne Wake, Fonthill Bishop, Fonthill Gifford, Fovant, Hindon, Kilmington, Mere, Netherhampton, Quidhampton, Sedgehill and Semley, South Newton, Stourton with Gasper, Stratford Toney, Sutton Mandeville, Swallowcliffe, Teffont, Tisbury, Tollard Royal, West Knoyle, West Tisbury, Wilton and Zeals.

The Area Board welcomes and invites contributions from members of the public. The chairman will try to ensure that everyone who wishes to speak will have the opportunity to do so.

If you have any requirements that would make your attendance at the meeting easier, please contact your Democratic Services Officer.

Networking opportunities will be available from 6:00pm.

Please direct any enquiries on this Agenda to Lisa Moore (Democratic Services Officer), on 01722 434560 or email lisa.moore@wiltshire.gov.uk

All the papers connected with this meeting are available on the Council's website at www.wiltshire.gov.uk

Press enquiries to Communications on direct lines (01225) 713114 / 713115.

Wiltshire Councillors

Cllr Tony Deane (Chairman)

Cllr Peter Edge

Cllr Jose Green

Cllr George Jeans

Cllr Bridget Wayman (Vice Chairman)

Tisbury

Wilton and Lower Wylde Valley

Fovant and Chalke Valley

Mere

Nadder and East Knoyle

RECORDING AND BROADCASTING NOTIFICATION

Wiltshire Council may record this meeting for live and/or subsequent broadcast on the Council's website at <http://www.wiltshire.public-i.tv>. At the start of the meeting, the Chairman will confirm if all or part of the meeting is being recorded. The images and sound recordings may also be used for training purposes within the Council.

By entering the meeting room you are consenting to being recorded and to the use of those images and recordings for broadcasting and/or training purposes.

The meeting may also be recorded by the press or members of the public.

Any person or organisation choosing to film, record or broadcast any meeting of the Council, its Cabinet or committees is responsible for any claims or other liability resulting from them so doing and by choosing to film, record or broadcast proceedings they accept that they are required to indemnify the Council, its members and officers in relation to any such claims or liabilities.

Details of the Council's Guidance on the Recording and Webcasting of Meetings is available on the Council's website along with this agenda and available on request.

If you have any queries please contact Democratic Services using the contact details above.

	Time
<p>1 Welcome and Introductions</p> <p>2 Apologies for Absence</p> <p>3 Declarations of Interest</p> <p>To receive any declarations of disclosable interests or dispensations granted by the Standards Committee.</p> <p>4 Minutes (Pages 1 - 12)</p> <p>To confirm as a correct record and sign the minutes of the previous meeting held on Wednesday 1 February 2017.</p> <p>To note any matters arising from the minutes of the last meeting.</p> <p>5 Chairman's Announcements</p>	<p>6.30pm</p>
<p>6 Shaftesbury & District Task Force</p> <p>Representatives from Shaftesbury & District Task Force will introduce the '<i>Save Our Beds Campaign</i>' in relation to the current NHS Dorset Clinical Commissioning Group consultation.</p>	<p>6.40pm</p>
<p>7 Dementia Friends</p> <p>An Information Session following the Area Board's decision on 1 February 2017 to join the Dementia Action Alliance. This session explores what it is like to live with dementia and how greater understanding can be turned into action.</p> <p>Further information can be found online at: https://www.dementiafriends.org.uk/WEBArticle?page=what-is-a-friend#.WLP0yrtdGpo</p> <p>Officer: Steve Harris, Community Engagement Manager.</p>	<p>6.50pm</p>
<p>8 Highways Major Maintenance Programme for 2017/18 (Pages 13 - 50)</p> <p>The Board is asked to consider the proposed schedule of works for 2017/18, as attached to the agenda.</p>	<p>7.35pm</p>

9	<p>Partner and Community Updates (Pages 51 - 56)</p> <p>To receive any verbal updates from Partners and Community Groups present, including:</p> <ul style="list-style-type: none"> • Police – Neighbourhood Teams • Fire & Rescue <p>To note any written updates or online links attached to the agenda:</p> <p>a) Wilton Town Team minutes b) Healthwatch Wiltshire c) Consultations: http://www.wiltshire.gov.uk/consultations.htm</p> <p><i>Note: Speakers are reminded that they each have a 3 minute slot, unless they have previously discussed alternative arrangements with the Community Area Manager.</i></p>	7.45pm
10	<p>Local Youth Network (LYN) (Pages 57 - 58)</p> <p>To note the minutes and consider any recommendations for funding arising from the last meeting, as detailed in the attached report.</p>	8.05pm
11	<p>Community Area Transport Group (CATG) Update (Pages 59 - 66)</p> <p>To receive an update from the Chairman of the group; Councillor Tony Deane and to consider any recommendations for funding arising from the last meeting, as detailed in the attached report.</p>	8.10pm
12	<p>Nadder Community Campus</p> <p>To receive an update on the progress of the Campus since the last meeting. The notes of the last Nadder Centre Board meeting will be circulated at the meeting.</p>	8.15pm

13 **Area Board Funding** (Pages 67 - 70)

8.20pm

Community Area Grants

The Board members will consider applications for funding from the Community Area Grants Scheme:

Applicant	Amount requested
Applicant: Tisbury Brocante & Fair Project Title: Display boards for TisburyWest Tisbury Neighbourhood Plan TisPlan View full application	£400.00
Applicant: Wilton Town Council Project Title: Wilton Town Trail and map boards View full application	£3800.00

14 **Close**

8.30pm

The next meeting of the Board is on Wednesday 31 May, 6.30pm at Broadchalke Sports Centre.

Future Meeting Dates 2017
Wednesday's at 6.30pm (refreshments from 6.00pm) 31 May 2017

MINUTES

Meeting: SOUTH WEST WILTSHIRE AREA BOARD
Place: Grove Buildings, Mere
Date: 1 February 2017
Start Time: 6.30 pm
Finish Time: 9.30 pm

Please direct any enquiries on these minutes to:

Lisa Moore (Democratic Services Officer), Tel: 01722 434560 or (e-mail) lisa.moore@wiltshire.gov.uk

Papers available on the Council's website at www.wiltshire.gov.uk

In Attendance:

Wiltshire Councillors

Cllr Tony Deane (Chairman), Cllr Peter Edge, Cllr Jose Green and Cllr George Jeans

Wiltshire Council Officers

Stephen Harris, Community Engagement Manager
Lisa Moore, Democratic Services Officer
Phillip Morris, Senior Development Manager, Public Health

Town and Parish Councillors

Berwick St. John Parish Council – R Carter & G Marks
Burcombe without Parish Council - C Churchill (also for Fovant, Quidhampton, Dinton & Donhead St Mary)
Mere Parish Council – J Jordan & B Norris

Partners

Wiltshire Police - Inspector Sparrow & PC A Hardman
Dorset & Wiltshire Fire and Rescue Service – Jason Moncrief

Total in attendance: 22

<u>Agenda Item No.</u>	<u>Summary of Issues Discussed and Decision</u>
1	<p><u>Welcome and Introductions</u></p> <p>The Chairman Cllr Tony Deane welcomed everyone to the meeting of the South West Wiltshire Area Board.</p>
2	<p><u>Apologies for Absence</u></p> <p>Apologies for absence were received from:</p> <ul style="list-style-type: none"> • Cllr Bridget Wayman • Robin Townsend – Associate Director • Sue Wight – Age Uk • Cllr David Robertson – Hindon PC Chairman • Cllr Phil Matthews – Wilton TC • Cllr Ken Taylor – Quidhampton PC
3	<p><u>Declarations of Interest</u></p> <p>There were none.</p>
4	<p><u>Minutes</u></p> <p><u>Decision</u></p> <p>The minutes of the previous meeting held on Wednesday 7 December 2016, were agreed as a correct record and signed by the Chairman; subject to the following amendments:</p> <p><i>5 October Meeting – Agenda Item 8, Community Policing. The Statement should have read:</i></p> <ul style="list-style-type: none"> • <i>Cllr Jose Green had met with Inspector Sparrow regarding poaching, and gambling in the Chalke Valley. Answer: There was a lot of poaching and gambling amongst the poachers in the area. It was also noted that due to poor mobile reception it was not always possible for people to report issues via their mobile phones when out in the rural locations.</i> • <i>Were the cross-border exercises referred to continuing? Answer: The Rural Crime team had regular meetings set up for Wiltshire and Dorset, these would continue.</i>

5	<p><u>Chairman's Announcements</u></p> <p>The Chairman made the following announcements:</p> <ul style="list-style-type: none"> • There had been a change to the date of the next meeting, this would now be held on Thursday 8 March 2017. • A Cyber Crime presentation would come to the May meeting. • People were encouraged to sign up for the Great British Spring clean during 3rd to 5th March 2017. • The Board was working on a scheme which would fund replacement white lines. • The Dinton Community shop had ceased trading. • Food digesters were still available to purchase at a subsidised price; however this subsidy would be cut next year. Follow the link for info: https://www.greatgreensystems.com/promotions/wiltshire/ • The A303 consultation was scheduled for Saturday 4th February at the Grove Buildings, Mere. The section up for consideration for change was Winterbourne Stoke. Further information was available on the Highways England website, where the consultation could be completed. • The Shaftesbury Cottage hospital was a small 40 bed hospital. The Dorset CCG were consulting what to do with those beds. Lester Dibden was mounting a defence for the hospital. We have been told that they will now include those areas of Wiltshire over the border that are less than 3 miles away in the consultation. Save our beds group.
6	<p><u>Warm and Safe Wiltshire</u></p> <p>The Board received a presentation from Phillip Morris on fuel poverty and the ways in which residents could be supported in their homes.</p> <p>The warm and safe service in partnership with Wiltshire Council had been running for the past year.</p> <p>There was an increasingly documented link between health and housing. It was recognized that living in cold homes had significant physical and mental health implications. New guidance had been issued by NICE on 5th March 2015 which provide 12 recommendations, three key points to take away were:</p>

1. Cold Homes are a health issue
2. Every contact must count
3. A single point of referral is necessary

Wiltshire Context:

- EWD Rated Wiltshire: 260 in 2012/13 (ONS)
- Number of households in Wiltshire in fuel poverty was 10% (2013) (20,523 of households) (DECC)
- 5,883 homes had no central heating (2011 census).
- Wiltshire properties were 23% less energy efficient (and more expensive to heat) than the national average

What we do:

- Free-phone based energy advice and support
- Home visits
- Fitting simple energy saving draught proofing measures for free
- Supported referral on for other relevant services
- Funding for improvements

Questions and comments included:

- The Area Board was trying to build on Community hubs to make sure these services were known to everyone in the community who may need to use them.
- How was fuel poverty calculated? – Answer: Households having to spend more than 10% of their income on fuel bills. In England there was a low income high cost fuel poverty definition.
- Many of us had received cold calls, saying that if you are a pensioner on benefits you can apply for money saving measures. Answer: There was a huge challenge with door step callers, there were others that offered support around heating measures. This service however was council run.
- An article had been published which stated that wall insulation had been proven to be insufficient. Answer: Cavity wall insulation has been proven to be effective, if installed correctly. Solid wall insulation also had to be carried out correctly, this could also make a substantial difference.
- What about listed buildings? Answer: Secondary glazing which did not impact on the property or was visible can be used. There was quite a lot of detailed guidance available.
- The Fire service was leading on the Safe and Well visits. People respected and trust the fire service and were happy to use them.

More information is available at: www.warmandsafewiltshire.org.uk

7	<p><u>Area Board community events and activities in 2017</u></p> <p>Community Engagement Manager; Steve Harris showed a DVD and gave an update on the events and activities taking place in 2017.</p>
---	---

	<ul style="list-style-type: none"> • There had been discussions around the creation of a Memorial Forest to commemorate the 10,000 soldiers that fell in the first world war, so that in the future people would be able to go there to learn more. • The Legacy Board was set up in 2012 had supported subsequent events each year. Gary Nunn from Wilton was involved with the Legacy Board and would continue to be involved with the Community Board. • 19 of our 38 parishes took advantage of the litter picking scheme last year. • The litter Picking would take place during 3 to 5 March. The collection of the litter would be coordinated and arranged for after 5 March. Info had already been circulated through the PC clerks and to schools. Litter picking equipment had already been made available last year and could be reused this year. <p>Questions and comments included:</p> <ul style="list-style-type: none"> • The Chairman asked those present whether instead of a forest memorial, would they prefer a tree planted in the individual parishes of the men who were lost? <u>Answer:</u> Well for those in areas such as Mere on the edge of the County would need to travel up to 45 mins to visit the chosen site, so having individual trees locally would benefit those areas. However some parishes may have lost a lot of men but do not have the room to plant the tree there. Maybe nice to plant a tree to commemorate it but then the forest as well. • It was likely there would be no cycle race this year as funding had dropped off. It was disappointing that these events were not continuing.
8	<p><u>Partner and Community Updates</u></p> <p>The Board received verbal updates from Partners and Community Groups present, including:</p> <p><u>Police Neighbourhood Teams</u> Inspector Sparrow gave the following update:</p> <ul style="list-style-type: none"> • A person had been charged with attempted murder in Wilton earlier in the month, following the discovery of a deceased female being found within his property. He has not yet been charged. No adverse impact report for Wilton. • Priorities had been focused on rural crime and poaching. An operation had been run liaising with the game keepers to try and work together to target poachers on the ground.

- There had been a spike in catapult damages to cards, this related to the rural crime. Unless you catch them in the act it was almost impossible to catch them. The police were fairly sure they know who was involved and were trying to catch them.
- There has also been a spike in non-dwelling burglaries, in areas around Downton and Redlynch, with a few coming towards Wilton. People were urged to be more aware, and advised to mark any power tools and keep them locked away.
- Community policing had been going for 3 months in the south Wiltshire area. This was going well one positive aspect being an improvement in response times. A lot of emphasis on call handling, by asking more questions at the first point have managed to reduce demand.
- There had been an increased problem in the west wilts area with non-dwelling burglaries. During Christmas time this was usually high anyway, with gifts stored outside in sheds and packaging left outside for all to see.
- The priority would be to push the PCSOs further to get the community confidence back up. They were doing the job of the Community Beat Officer.
- An Internet safety day would be held next week. Cybercrime was not just about the internet, in included scams and smart phones. We were looking to expand our coffee mornings to roll this out to more people.

Comments and questions:

- The Chairman noted that it was public perception that the police had disappeared from the streets. Answer: Having our Police vehicles parked visibly in the communities and in the villages, had brought about positive comments.
- The Chairman announced that the Tisbury Community Safety Partnership had been coordinated by Bev, as the Police no longer had the resources to keep it running. It was used to help set police priorities and as a link between the community and the police. The Board would like to morph it in to an area community safety partnership. There would be 4 meetings a year, 2 meetings at Nadder centre, one in Mere and one in Wilton. Police attendance at these meetings would continue.
- It would be important to have the right people around the table if you were launching a new Group. Not all the problems would be police related. Other partners needed to be involved to ensure we can look to the best partner to deal with each individual issue. Answer: The next meeting had been scheduled, all partners willing to come on board would be welcome.

Fire & Rescue – District Commander Jason Moncrief

Ben Ansell was the newly appointed Chief Fire Officer at the beginning of December. Jim Marney would take up the assistance chief post.

6000 safe and warm visits had been carried out in first 6 months of the organisation. That number would increase as we moved forward. The contact for arranging one of these was available on the website.

The Safe Drive Stay Alive initiative was running for students and military establishments.

Nov was quiet month for all three areas of South West Wiltshire, with Tisbury and Mere still getting some co-responder shouts. In December Mere received 10 co-responder incidents with 4 on Christmas eve. There had been 35 incidents in total for the area.

Availability was still a struggle during the day, especially in Tisbury. This was making it hard to keep the appliance available during the day. We urge anyone with an influence over local employers to promote the retained Fire Service to their employees.

Comments and Questions:

- Would there be future changes to the service and should we expect any fundamental changes at Mere, Tisbury and Wilton? Answer: They were all retained stations, so all manned by people giving a large commitment. We were looking at how we pay them and how we incentivise it. Wilton provided better cover as they were looking at when they could be on cover all the time. There had been talks of moving Tisbury fire station but there were no set plans yet. There were safe numbers of people and water to be able to attend property fires. There may be a better way of managing people and vehicles, but not by reducing crews.
- Now that Dorset and Wiltshire had come together we could look at both ways of doing things and rewrite the rules to get the best out of the service.
- On the first response were you looking at smaller man power? Answer: We need a minimum of 4 in a vehicle currently to operate safely. In Gillingham the first responder is able to go alone in the car if they feel comfortable doing so.

The Board noted the written updates and information attached to the agenda and circulated at the meeting:

- a) Healthwatch Wiltshire
- b) PCC Precept Consultation

	<p>c) Clinical Commissioning Group d) Wilton Town Team Minutes e) Wiltshire Council Consultations f) Community Policing – circulated at the meeting</p>
9	<p><u>Local Youth Network (LYN)</u></p> <p>Community Engagement Manager, Steve Harris gave a Youth update to the Board, this included:</p> <ul style="list-style-type: none"> • There had not been a LYN meeting since the last Board meeting • There was now a free youth evening at the Nadder Centre which was run by Seeds 4 Success. 35 young people to each evening so far. • The Area Board had previously funded some ‘Anyone can cook’ sessions. The sessions in Chalke Valley had not yet taken place as they had been unsuccessful in finding someone to facilitate the sessions so far. The plan was to offer something else instead to the NEAT young people with transport.
10	<p><u>Health and Wellbeing Group</u></p> <p>The Board noted the minutes of the last Health & Wellbeing Group meeting held on 14 December 2016.</p> <p>The Board’s H&W Champion Cllr Jose Green, noted that the Group had agreed that there would be a drive to recruit more Champions in the communities to keep a safe eye on vulnerable people.</p> <p>The Board considered the recommendations arising from the last meeting and to adopt the Terms of Reference, as detailed in the attached reports.</p> <p><u>Decision</u> The South West Wiltshire Area Board approved:</p> <ul style="list-style-type: none"> • The draft terms of reference. • The H&WB Group recommends to the South West Wiltshire Area Board that an application be made to create a Dementia Action Alliance, with the work monitored by the H&WB Group. <p>The Community Engagement Manager then read out the following update on behalf of the H&WB Champions:</p> <p>Throughout January, we have continued with the project to identify every activity held in the South West Area. This is nearly complete and will be available to members of the area board and parish councils later this month. Meetings have been held with Health watch, Alzheimer’s Support, The SW care</p>

	<p>coordinator and Wiltshire and Swindon user's network.</p> <p>Jointly we have attended a Dementia Awareness meeting to identify the actions required if SW Area board gives its approval for the S. West Area to become a dementia Action Alliance.</p> <p>We are helping progress the provision of Safe places in our area and have handed out over 200 ice cards to potentially vulnerable people.</p> <p>Funding has been identified for the opening of a Memory Group in Mere and an application has been placed for funding for the development of the Sensory Garden in Tisbury which is a project instigated by Ann-Marie for and on behalf of the Tisbury Memory Group and Tisbury Community.</p> <p>On 25th January we attended a meeting organised for the Health and Wellbeing champions and older people's champions across Wiltshire and had time to review activities in all areas as well as receiving training on falls, healthy consultation, carers awareness and what success would look like.</p> <p>We both continue with our community work running 3 local groups which directly complements the work we carry out as Health and wellbeing champions.</p> <p>Regards Ann-Marie Dean and Valerie O'Keefe.</p>
11	<p><u>South West Wiltshire Community Safety Partnership</u></p> <p>The Board had discussed this item under partner updates. Jason Moncrief of Dorset & Wiltshire Fire and Rescue agreed to attend the four meetings per year.</p> <p><u>Decision</u> The South West Wiltshire Area Board agreed to form a Community Safety Partnership</p>
12	<p><u>Nadder Centre Update</u></p> <p>The Chairman gave an update, where he noted that originally there had been an area on the first floor, which had not been fitted out. This was earmarked for further education. Since the opening Wiltshire Council had found money to fit it out and were now trying to commercially let it. This would require a change of use permission through Planning. The community had said that they did not want the space let out for community use.</p> <p><u>Question:</u></p> <ul style="list-style-type: none"> • How long was left of the lease for the old library? <u>Answer:</u> The CEM would find out and feedback. <p><u>Decision</u> The South West Wiltshire Area Board approved the following:</p> <ol style="list-style-type: none"> 1. To object to proposed use of first floor space, losing the opportunity to provide educational training according to the original vision, and request

	<p>cost benefit analysis of letting space.</p> <p>It was confirmed by Councillors Jeans, Green and Edge they would continue to have an open mind in considering any future information, should the matter come before the Southern Area Planning Committee, on which they were members, for determination.</p> <ol style="list-style-type: none"> 2. Adopt updated Nadder Centre Purpose, Vision, and Guiding Principles Paper. 3. £3,000 to be ring-fenced for installation of art display area within the Nadder Centre, including costs for design. £5,000 to be committed for public art project, matching the £5,000 currently available as a result of the Hindon Lane development. 4. Tisbury History Society to be offered 7-year lease with 5-year rent protection, consisting of 3 years at agreed rate plus 2 years agreed rate plus, inflation. 5. Larger community noticeboard should replace existing board to enable more advertising for local groups and events.
13	<p><u>Area Board Funding</u></p> <p><u>Update on Seeds 4 Success Funding</u> The Community Engagement Manager updated on the previous funding allocated to Seeds 4 Success. A £60,000 contract had been agreed, with the first year's £30,000 paid. The second year would be split in to 2 tranches. The first payment this year and then the second payment to be brought back to the new Area Board in 2017/18 for approval by newly elected Board Members.</p> <p><u>White Lines Funding</u> £10,000 had been put aside for the White lines project. Parish Councils had been asked to list the lies which they would like to have renewed. The board had a pricelist from CG Asphalt. Works would be carried out in the spring.</p> <p>White lines were revenue funding and not capital, so to allocate these funds, the Board would free up some revenue funding. There had been responses from 20 parishes to take up this initiative. The request list has been costed, a revised schedule would be produced.</p> <p><u>Community Area Grants Funding</u> The board considered applications for funding as detailed in the agenda. Applicants present were invited to speak in support of their projects. Following discussion, the Board voted on each application in turn.</p> <p><u>Decision</u> Fovant Village Hall Management Committee was awarded £2829.50</p>

	<p>For a new kitchen at Fovant Village Hall.</p> <p>Cllr Jeans noted that to his knowledge, he had not supplied anything electrical towards this project.</p> <p><u>Decision</u> Mere Footpath Group was awarded £370.33 towards equipment For the Group.</p> <p><u>Public Toilets Funding</u> Each Area Board had been given £1,000 from Highways to make toilets available for public use.</p> <p><u>Decision</u> Mere Parochial Church Council was awarded £1,000 towards the Church toilets works at the St Michaels church with the condition that there be discrete signage.</p> <p>Cllr Edge noted that there were already public toilets available in Mere, he did not support this project.</p> <p><u>Project funding</u> The Board considered the project funding bids as detailed in the attached report.</p> <p><u>Decision</u> The South West Wiltshire Area Board allocated £530 of Fingerpost funding to Tisbury Parish Council for one replacement fingerpost.</p> <p><u>Decision</u> The South West Wiltshire Area Board allocated £3,000 of Youth and Community Project funding towards the Wilton Wheels project with the condition that an acceptable business plan was submitted.</p> <p><u>Decision</u> The South West Wiltshire Area Board allocated £620 towards the Community Communications project in Berwick St John, with the condition that you investigate the WC grant of £300, and if available then the Area Board award would be reduced by that amount. It was agreed that the password would be displayed in the premises.</p>
14	<p><u>Close</u></p> <p>The next meeting of the South west Wiltshire Area Board will be held on Wednesday 8 March 2017, at the Nadder Centre, Tisbury.</p>

Wiltshire Council

South West Area Board

DATE

Subject: Area Board Highways Information

Cabinet Member: Councillor Philip Whitehead – Highways and Transport

Key Decision: No

Executive Summary

The local highway network is vital to providing connectivity for businesses and communities, and effective maintenance to ensure its availability is essential to the economic development of the county. Wiltshire Council recognises the importance of maintaining and managing its highway network effectively.

The 'Local Highways Investment Fund 2014 – 2020' is addressing the long standing under investment in highways maintenance, which has been a problem nationally for many years.

The significant investment of £21 million annually for six years by Wiltshire Council has already seen a substantial improvement in the condition of the county's road network, with a 30% reduction in the carriageway maintenance backlog in the first two years of the investment.

Information has been prepared for each Area Board (see **Appendix 1**) showing the schemes completed in recent years, and a summary of road condition information.

An indicative list of priority sites for treatment in 2017/18 has been developed (see **Appendix 2**). The list includes substantial surface dressing on rural roads in the area, and skid resistance improvements at key locations.

Proposals

It is recommended that:

- (i) It is noted that good progress has been made on implementing the 'Local Highways Investment Fund 2014 – 2020', and there has been a substantial improvement in road conditions in Wiltshire.
- (ii) The list of proposed are reviewed and any amendments or potential future sites for treatment are forwarded to the Highways Asset Management Team for further investigation.

Reason for Proposals

The highway network forms the Council's largest asset, and it is important that it is maintained in the most cost-effective way in order to show value for money. This includes the use of asset management and whole life costing approaches to inform investment decisions.

Asset management principles have been applied for many years in Wiltshire to ensure appropriate investment with longer term planning. The list of proposed sites for treatment in 2017/18 should further improve the condition of the Council's roads.

Parvis Khansari
Associate Director Highways and Transport

Wiltshire Council

South West Area Board

DATE

Subject: Area Board Highways Information

Cabinet Member: Councillor Philip Whitehead – Highways and Transport

Key Decision: Yes

Purpose of Report

1. To provide an update on progress on the 'Local Highways Investment Fund 2014 – 2020', and to consider future road resurfacing sites.

Relevance to the Council's Business Plan

2. The highways service supports three priorities of the Council's Business Plan:
 - Outcome 2 – People in Wiltshire work together to solve problems locally and participate in decisions that affect them
 - Outcome 3 – People in Wiltshire have a high quality environment
 - Outcome 6 – People are as protected from harm as possible and feel safe

Background

3. The local highway network is vital in providing connectivity for businesses and communities; effective maintenance to ensure its availability is essential to the economic development of the county. Wiltshire Council recognises the importance of maintaining and managing its highway network effectively.
4. The highway network in Wiltshire comprises 4,400 kilometres of road, 3.9 million square metres of footway, 981 bridges and over 50,000 street lights and illuminated signs. The replacement value of the assets is over £5 billion, and it would cost over £330 million to resurface all of the Council's roads.
5. The condition of the county's roads is important to the public. This is demonstrated by the results of the Council's People's Voice and the National Highways and Transportation (NHT) surveys, which indicate low levels of public satisfaction with road conditions nationally.
6. In October 2013 Cabinet agreed to increase highway maintenance funding to £21 million for six years. This was subsequently included in the Council's future budget, and forms the basis of the 'Local Highways Investment Fund 2014 – 2020'. The increased investment in highways maintenance has enabled a large

number of schemes to be progressed to improve the condition of the network and its infrastructure.

7. The Council has applied the principles of asset management to the maintenance of the highway network, which involves taking into account the lifecycle of the assets and monitoring performance of the intervention and investment strategies. The Highways Asset Management Policy and Strategy were reviewed by the Environment Select Committee in October 2015 and subsequently adopted by Cabinet.

Main Considerations for the Council

Local Highways Investment Fund 2014 – 2020

8. The 'Local Highways Investment Fund 2014 – 2020' is addressing the long standing under investment in highways maintenance and consequent backlog, which has been a problem nationally for many years. The proposed significant investment of £21 million annually for six years by this Council is delivering substantial improvements in the condition of the highway network in Wiltshire.
9. A range of investment options was initially considered, which ranged from spending the minimum necessary to keep road conditions unchanged to treating the whole of the network. It was intended that the investment should be used to improve approximately 664 kilometres of the network (about 15%), and that annually up to 238 Kilometres of road could be surfaced, depending on the treatment required and the deterioration of the network.
10. In the first two years of the investment there were a number of sites which needed substantial reconstruction work and, as expected, the lengths of road treated were consequently less than the indicative target. In 2016/17 a substantial programme of surface dressing has been undertaken and the total length of road resurfaced has increased considerably.

Year	Length treated (km)
2014/15	148
2015/16	182
2016/17	250

11. A total of 580 kilometres of road has been resurfaced to date, and the Council is currently on target to achieve the anticipated improvement by 2020, subject to funding continuing at current levels. There have also been a significant number of smaller sites treated with hand patching, which has addressed localised areas in poor condition.
12. The detailed calculation of the backlog carried out by the Council's specialist consultants WDM indicates that there has been a significant reduction in the highways maintenance backlog in the first two years of the investment:

	2013/14	2014/15	2015/16
Calculated backlog	£69.4 million	£63.3 million	£48.2 million

13. The backlog has decreased by 30% since the 'Local Highways Investment Fund 2014 – 2020' started. Good progress has been made in reducing the backlog, but continuing investment, as originally planned, would be required to remove the remaining backlog.
14. A summary of road conditions and other highway information has been prepared for the Area Board (see **Appendix 1**). This information will form the basis of data to be made available on the Council's website, including regularly updated information on potholes and other reports through the My Wiltshire app, the website and by telephone. The website will also be developed to explain the Council's highway maintenance policies and strategies in greater detail.
15. The Council's highways maintenance investment strategy was developed using the Department for Transport funded Highways Maintenance Efficiency Programme (HMEP) toolkit, which identified that timely investment in surface dressing of the minor rural roads would be cost-effective given the current condition of the local road network.
16. The individual sites for treatment were identified from the technical surveys of the road conditions, and were assessed and confirmed by the highway engineers. The lists of proposed sites for treatment have been reviewed by the Area Boards where representatives of the town and parish councils have been given the opportunity to consider local priorities.
17. Surface dressing work was carried out on a number of minor roads across the county last summer. This work sometimes known as 'tar and chippings' is preventative maintenance to seal the road construction and restore skid resistance. It is a cost effective way of extending the useful life of the roads.
18. Not carrying out any maintenance on these minor roads may initially appear attractive in order to save money, but in the longer term that would be a false economy as the repairs would be substantially more expensive if the roads were allowed to deteriorate, and there would be an increasing risk of claims as a result of accidents. The cost of injury compensation claims can be significantly higher than the repair costs, and the cost of doing repairs once a road is in bad condition would be much higher.
19. The overall condition of the road network in Wiltshire is now broadly similar to other authorities in the south west. However, based on the 2015 survey results, which are the latest available nationally, the condition of Wiltshire A roads is the same as the national average, but is below the south-west average. The B and C road conditions in Wiltshire are better than both the national and south west averages, but still not as good as in some of the other authorities in the south west.

20. The condition of the unclassified roads is more difficult to compare as the assessment methods are not necessarily consistent across authorities. In general terms the condition of the more important unclassified roads in Wiltshire compares well with similar authorities, but further assessment will be required to get a better understanding of conditions across the south west.
21. The National Highways and Transportation (NHT) surveys indicate that public satisfaction with road conditions in Wiltshire is below the national average, and for some years has been consistently lower than for similar authorities in the south west. It is anticipated that the effects of the current investment strategy will improve the results of future public satisfaction surveys.

Proposed Surfacing Programme 2017/18

22. Road safety is the top priority, and it is important to treat those sites identified as having reduced skid resistance in accordance with the Council's Skid Resistance Policy. It is necessary to have adequate skid resistance in order to reduce accidents and avoid claims against the Council.
23. There are a number of processes used to improve the road surface:
 - a. Retexturing- the surface is roughened by high pressure steel shot or water to abrade the surface to produce a rougher surface texture. This is cost-effective and avoids the substantially more expensive resurfacing which would otherwise be required.
 - b. Surface dressing – the traditional 'tar and chip' where the road is sprayed with hot bitumen and stone chippings are spread and rolled in. This is a cheap solution to seal the road surface and protect the underlying construction. This process should ideally be repeated every six or seven years.
 - c. Resurfacing – the existing road surface is usually milled off and a new layer of bituminous material is laid. In many cases stone chippings are rolled in to provide additional texture. This is the most durable surfacing but is expensive compared to the other treatments.
24. Careful consideration is given to which treatment to use, taking into account the condition of the existing road surface, volume and type of traffic. In some cases deeper reconstruction is required on sections of road to ensure there is a suitable foundation for the new surface.
25. There are a number of sites which were identified for treatment in previous years which for various reasons it has not yet been possible to complete yet. These have been included in the proposed programme for 2017/18, and will generally be programmed for the start of the programme.
26. There was an extensive programme of surface dressing of rural roads across the county this year. Within the villages and the more built up areas this treatment can be less robust, especially where there are significant vehicle turning

movements, and other surfacing materials can be more effective in these locations. It is intended to carry out surfacing in many of the built up areas adjacent to these recently surface dressed roads.

27. It has been some years since there has been surface dressing on many of the county's minor roads and this is a process which should ideally be repeated every six or seven years. It is proposed to continue the programme of surface dressing in 2017/18, with a large number of sites in the south of the county identified for treatment.
28. A list of priority sites for carriageway resurfacing work has been identified for the Area Board in 2017/18 (see **Appendix 2**). The list of sites will be reviewed and developed in more detail following consideration by the relevant Area Board.
29. The condition of many of the footways in residential areas has been a concern for some years. It has been possible to treat some of these in conjunction with adjacent carriageways when they have been resurfaced, but there are many footways which would benefit from treatment even though the road is in reasonable condition.
30. A survey of the condition of the county's footways is approaching completion and is being used to develop a list of sites for treatment. In view of the amount of footway in need of treatment it is proposed to prioritise the renewal or resurfacing of those areas identified as being in worst condition. The local Highways Engineers are reviewing the sites for treatment, taking into account the survey data.

Safeguarding Implications

31. None.

Public Health Implications

32. The condition of roads and related infrastructure can have serious safety implications. Improving the condition of highways contributes to reducing accidents, especially with regard to improving skid resistance. Roads, bridges, highway structures, signs and street lighting need to be kept in good condition in order to protect the public and those maintaining the assets.
33. The investment through the 'Local Highways Investment Fund 2014 – 2020' is improving the condition of the highway network and safety.

Corporate Procurement Implications

34. There are no procurement implications at this stage.

Equalities Impact of the Proposal

35. The improved maintenance of the highway network, its management using sound asset management principles, and good performance by the highways

contractors, should benefit all road users, including public transport, and vulnerable road users such as cyclists and pedestrians.

Environmental and Climate Change Considerations

36. The effects of climate change could be significant for the highway network as was seen in the flooding of 2014, and the consequent damage to the roads, footways and drainage systems. Having robust maintenance strategies to improve the condition of the network helps build resilience into the infrastructure.
37. Where possible, suitable materials arising from road resurfacing schemes are recycled. Large quantities of road planings are used to repair damage on rights of way and on county farms, or provided to community groups. The presence of tar bound materials in older carriageways has caused problems on some sites as it has to be disposed of as contaminated waste, with consequent cost implications. Options for in-situ and other recycling processes are being examined in order to increase the recycling of highway materials.

Risk Assessment

38. The application of good asset management principles, including the planned maintenance of the highway infrastructure and the establishment of formalised asset management policies, helps reduce the risk of incidents and claims.

Risks that may arise if the proposed decision and related work is not taken

39. There is a risk of increased accidents, claims and public dissatisfaction if the programme of highway maintenance is not delivered or delayed. The principles of asset management have been followed by this Council for many years, but as future DfT funding will be dependent on demonstrating the application of good practise and asset management principles. Failure to do so will result in reduced funding in future years.

Risks that may arise if the proposed decision is taken and actions that will be taken to manage these risks

40. It is important to ensure that highways asset management and service delivery are implemented effectively. Processes are currently in place with Service Delivery Teams established. These include representatives from the Council, consultants and contractors involved in delivering the services, and report to the Contract Management Meeting comprising senior managers from those organisations.

Financial Implications

41. The highway network and related infrastructure forms the Council's largest asset, and has a replacement value of over £5 billion. It is important that they are maintained in the most cost-effective way in order to achieve value for money. This includes the use of a whole life costing approach to inform investment decisions.

42. The increasing drive for asset management from DfT will mean that failure to demonstrate the application of this approach will result in reduced funding from central government. An increasing proportion of available funding will be potentially withheld as an incentive. By 2020/21 Wiltshire could lose out on £2,782,000 of DfT funding if good asset management is not followed.
43. The financial pressures on the Council are well understood, and it may be necessary to reduce investment in the future. This would reduce the scope for consultation with the Area Boards as resurfacing work would need to be concentrated on those sites with serious safety defects.

Legal Implications

44. The Council has a duty under the Highways Act to maintain the county's roads. The highway inspection procedures, policies and improvement plans ensure that this duty is fulfilled. The increased investment and improved road conditions is helping the Council meet its responsibilities with regard to road maintenance.

Options Considered

45. There is a need to continue to apply asset management principles to the highway network and to ensure the performance of the contractors involved in delivering the service is good in order to keep the network in good condition and to ensure value for money.

Conclusions

46. The highway network forms the Council's largest asset, and it is important that it is maintained in the most cost-effective way in order to show value for money. This includes the use of whole life costing approaches to inform investment decisions.
47. The 'Local Highways Investment Fund 2014 – 2020' has provided the opportunity to address the long standing under investment in highways maintenance, which has been a problem nationally for many years. The significant investment of £21 million annually by Wiltshire Council is seeing a substantial improvement in the condition of the highways network.
48. Good progress has been made in delivering the programme of highway maintenance and has included the involvement of the Area Boards to help set local priorities. It is intended that this process should continue in future years.

Parvis Khansari
Associate Director Highways and Transport

Report Author:
Peter Binley
Head of Highways Asset Management and Commissioning
January 2017

The following unpublished documents have been relied on in the preparation of this report:

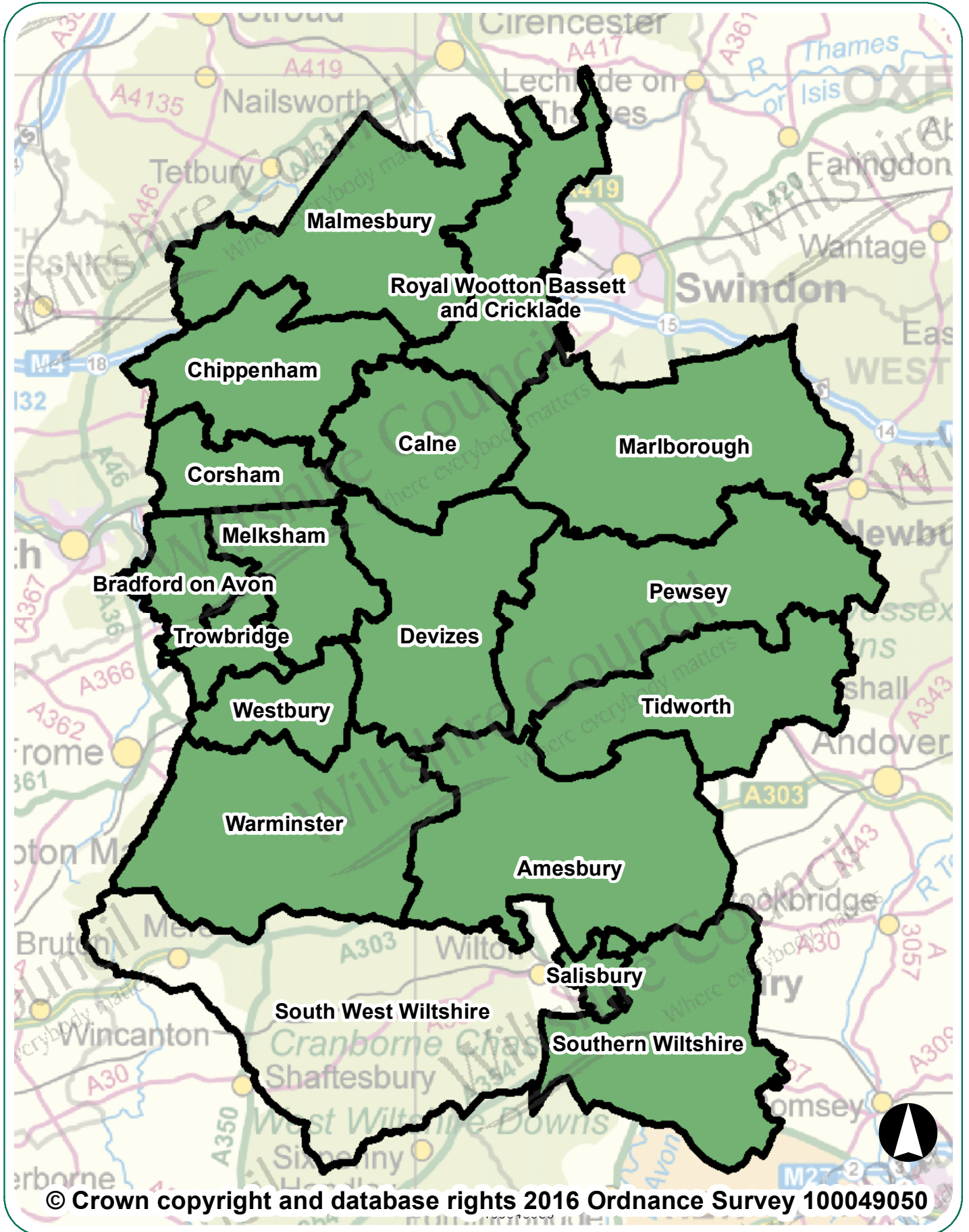
None

Appendices

Appendix 1 – Local Highways Information

Appendix 2 – Proposed priority surfacing sites for 2017/18

South West Wiltshire Area Board Highway Information



South West Wiltshire Area Board Highway Information

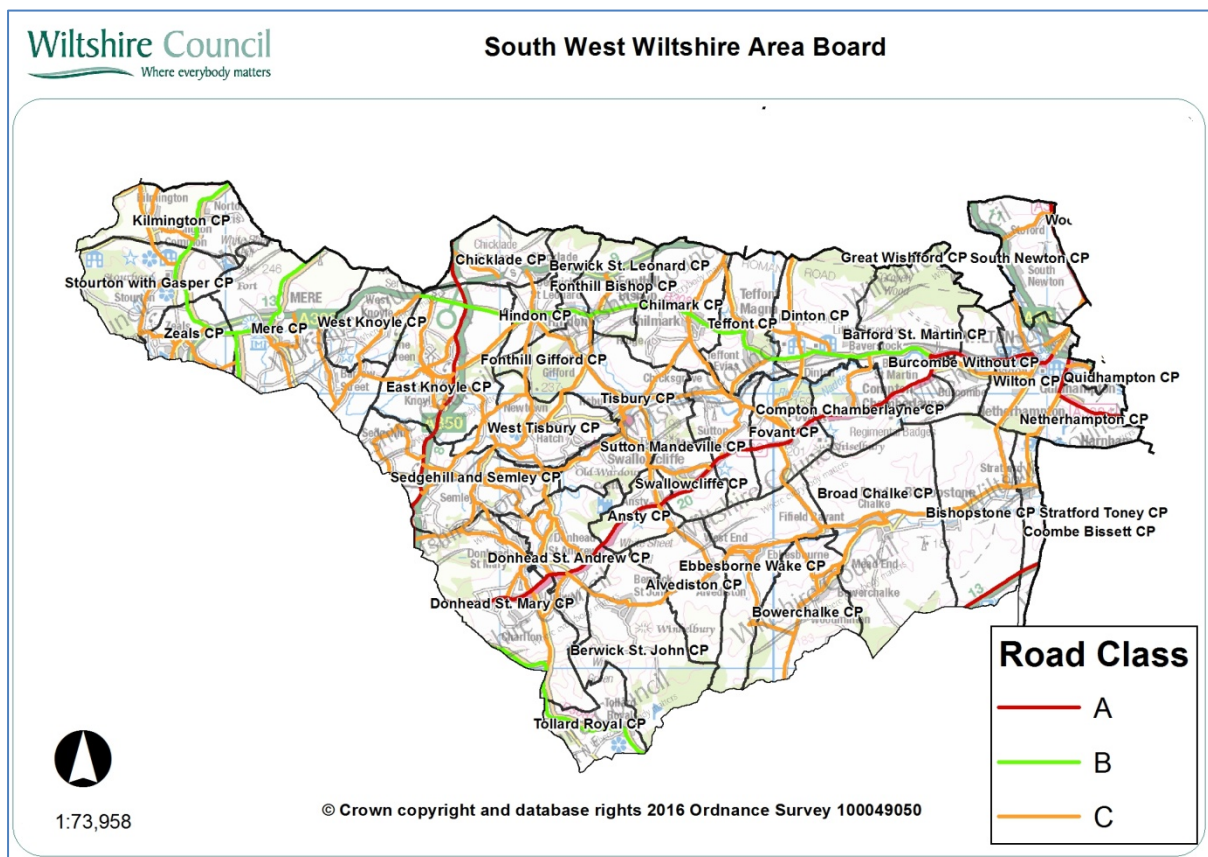
Introduction

This document summarises highway information for your area board. It lists the recent highway and related work carried out by Wiltshire Council, including the road resurfacing carried out during the first two years of the 'Local Highways Investment Fund 2014 – 2020', and includes other information which should be of interest.

Further information on the Council's activities is available at the website www.wiltshire.gov.uk. If you wish to report a specific highway issue please use My Wiltshire. Details are provided at the end of this document.

Parishes in the community area are:

Ansty, Wilton, Netherhampton, Berwick St John, Quidhampton, South Newton, Berwick St Leonard, Chicklade, Bower Chalke, Broad Chalke, Chilmark, Donhead St Andrew, Bishopstone, Stratford Toney, Teffont, Dinton, Compton Chamberlayne, Barford St Martin, Burcombe Without, Donhead St Mary, Alvediston, Ebbesbourne Wake, East Knoyle, Fonthill Bishop, Fonthill Gifford, Fovant, Hindon, Kilmington, Mere, Sedgehill & Semley, Stourton With Gasper, Sutton Mandeville, Swallowcliffe, Tisbury, Tollard Royal, West Knoyle, West Tisbury, Zeals



Network statistics in your area

Road length by class

Road type	Urban (km)	Rural (km)
A Class Roads	8.45	36.9
B Class Roads	8.05	35.16
C Class Roads	43.00	191.48
Unclassified Roads	52.13	153.43
Total	111.63	416.97
	Overall Total	528.6

The council categorises its roads to reflect their importance. This enables an effective assignment of highway inspection frequencies and maintenance standards.

Highway assets in your area

The council keeps an inventory of its highway assets in order to assist planning its highway maintenance. Important statistics relating to your board area are:

Asset Type	Measure
Carriageway	528.6 km
Footways adjacent to road	76 km
Footways (linked)	6.76 km
White road centre lines	147 km
Road kerbs	137 km
Grass verge (maintained)	941 km
Drainage grips	2, 491 number
Drainage pipe grips	147 number
Drainage gullies	4, 663 number
Road signs	3, 347number
Street lights	1, 407 number

Major highway maintenance

Road resurfacing

Wiltshire has over 3,000 miles of road. The Council's 'Local Highways Investment Fund 2014 – 2020' is making a massive investment to improve the condition of the roads in Wiltshire over six years. The programme of work started in April 2014, and is designed and supervised by the Council's consultants Atkins, with the work carried out by our main highway contractors Tarmac and Eurovia.

The work carried out in the first two years of the programme has improved a considerable number of the roads in previously poor condition. The locations of sites treated in recent years are shown below.

Carriageway repairs

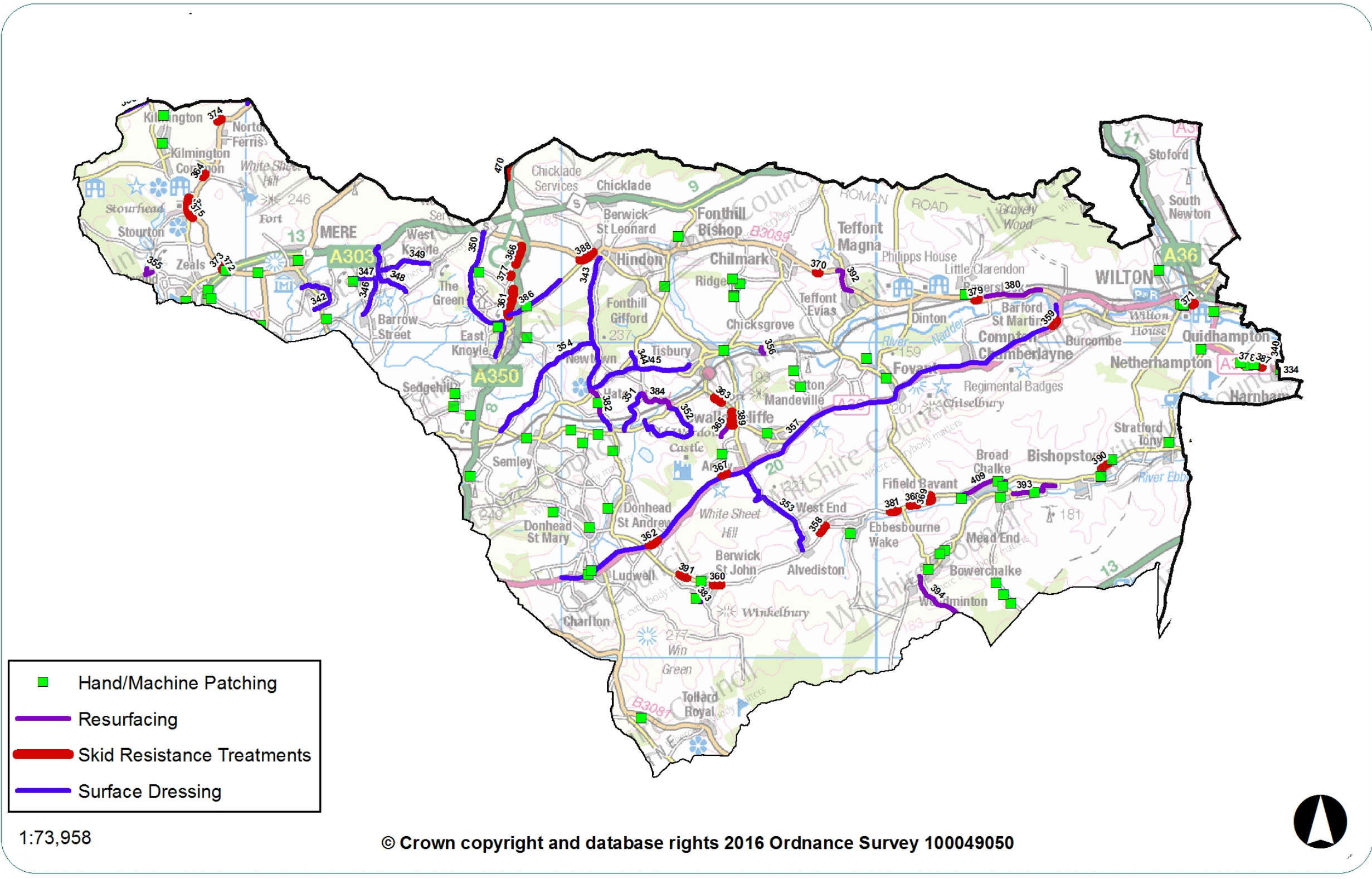
As well as resurfacing roads other works are undertaken to make localised repairs to keep the roads safe. The works undertaken in your area since 2014 are shown on the map below.

The wet winter and flooding in previous years has resulted in substantial damage to the road network. It is important that serious defects are treated promptly to keep the roads safe. The Council currently operates four Pothole teams that respond to urgent issues to keep the roads safe.

Plan showing major maintenance schemes & hand/machine patching sites completed since 2014



South West Wiltshire Area Board



Major maintenance completed since 2014

No	Location	Works
342	Shaftesbury Road northeast to Limpers Hill into Southbrook to junction Shaftesbury Road	Surface Dressing
343	Share Corner junct of Batch Cott crossroads. Bratch Farm, Pythouse Farm, Mockeny Wood, High St	Surface Dressing
344	Hatch Lane north to y junction north of Upper Lawn Barn	Surface Dressing
345	Hatch Lane, Newtown to Tuckingmil junction with Monmouth Road	Surface Dressing
346	Barrow Street Lane, Barrow Street	Surface Dressing
347	Six Acre Lane, Barrow Street	Surface Dressing
348	Bottom of Chadenwick Hill, Six Acre Lane south into Six Acre lane to junction The Street	Surface Dressing
349	The Middles east to The Street West Knoyle	Surface Dressing
350	Shaftesbury Road north to junction B3089	Surface Dressing
351	Share lane to Hazeldon	Surface Dressing
352	Nightingale Lane to junction Hazeldon Lane	Surface Dressing
353	Ansty Pond southeast C315 to Crockerton Firs to southeast C315 to Alvediston	Surface Dressing
354	Tokes Lane, Semley into Kinghay northeast C309 to Mockeny Wood	Surface Dressing
355	Fordswater	Resurfacing
356	Quarry Lane, Lower Chicks Grove	Resurfacing
357	Rural A30 from County Boundary to Barford St Martin	Surface Dressing
358	Top Road, Ebbesbourne Wake	Skid Resistance Improvements
359	C338 (C/Chamberlayne) To C325 (Burcombe)	Skid Resistance Improvements
360	30 Mph Berwick St John To Unclassified Road Trow Down	Skid Resistance Improvements
456	B3092 junction with Rodmead Farm Lane north to Church Street, Maiden Bradley	Surface Dressing
361	A350 Warminster Hollow, East Knoyle	Skid Resistance Improvements
362	Whitesand Cross To Sands Lane	Skid Resistance Improvements

South West Wiltshire Area Board Highway Information

No	Location	Works
363	Jobbers Lane, Tisbury	Skid Resistance Improvements
364	C55 Stourton Lane To C341	Skid Resistance Improvements
365	Squalls Lane	Resurfacing
366	C305 (To Milton) To B3089 (To Mere)	Skid Resistance Improvements
367	Horwood Lodge To Ansty Road	Skid Resistance Improvements
368	C326 Stowford Birdge To C64 Fifield Bavant	Skid Resistance Improvements
369	C326 Stowford Bridge To C64 Fifield Bavant	Skid Resistance Improvements
370	UC To Cleeve Farm To 30mph Teffont Magna	Skid Resistance Improvements
371	North St To Wilton Rbt.	Skid Resistance Improvements
372	C/L Slip To A303 To B3092 T Junction (Zeals)	Skid Resistance Improvements
373	C/L Slip To A303 To B3092 T Junction (Zeals)	Skid Resistance Improvements
374	Coombe Barn Lane To 30mph Maiden Bradley	Skid Resistance Improvements
375	C278 High Street To C55 Stourton Lane	Skid Resistance Improvements
376	Junction with High Street, Stourton	Skid Resistance Improvements
377	C305 (To Milton) To B3089 (To Mere)	Skid Resistance Improvements
378	2nd Exit From Netherhampton To Montague Road	Skid Resistance Improvements
379	UC Baverstock Lane To C338 Horse Shoe Lane	Skid Resistance Improvements
380	B3089 Hurdcott Bend to Barford St Martin	Resurfacing
381	West of Stowford Lane, Ebbesbourne Wake	Skid Resistance Improvements
382	Barretts Hollow	Resurfacing
383	Blind Lane Berwick St John	Resurfacing
384	East Hatch - Level crossing to Hatch Lane	Resurfacing
409	C12 Broadchalk, Bishopstone and Coombe Bissett	Resurfacing
385	Druley Hill, Yarnfield Gate	Surface Dressing

South West Wiltshire Area Board Highway Information

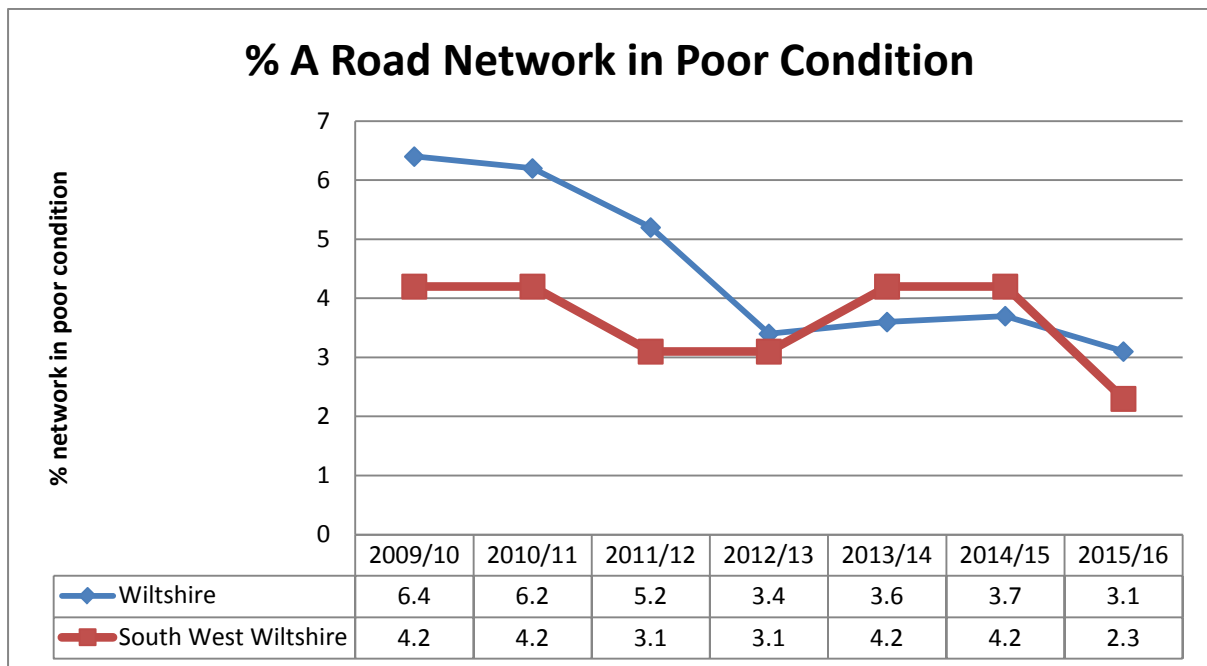
No	Location	Works
386	C41 Druley Lane, Yarnfield Gate; C58 Sheephouse Lane, East Knoyle; C309 Tokes Lane	Surface Dressing
387	A3094 Netherhampton Road, Salisbury	Skid Resistance Improvements
388	B3083 Angel Lane, Hindon	Skid Resistance Improvements
389	At Spilsbury Farm, North of Ansty	Skid Resistance Improvements
390	High Road, Bishopstone	Skid Resistance Improvements
391	Northwest of Church Street, Berwick St John	Skid Resistance Improvements
392	B3089 Hindon Road/Teffont Village	Resurfacing
393	Knighton Road, Broad Chalk	Resurfacing
394	Misselfore to Cow Down Hill/ Hampshire Boundary	Resurfacing

Highway conditions and technical surveys in your area

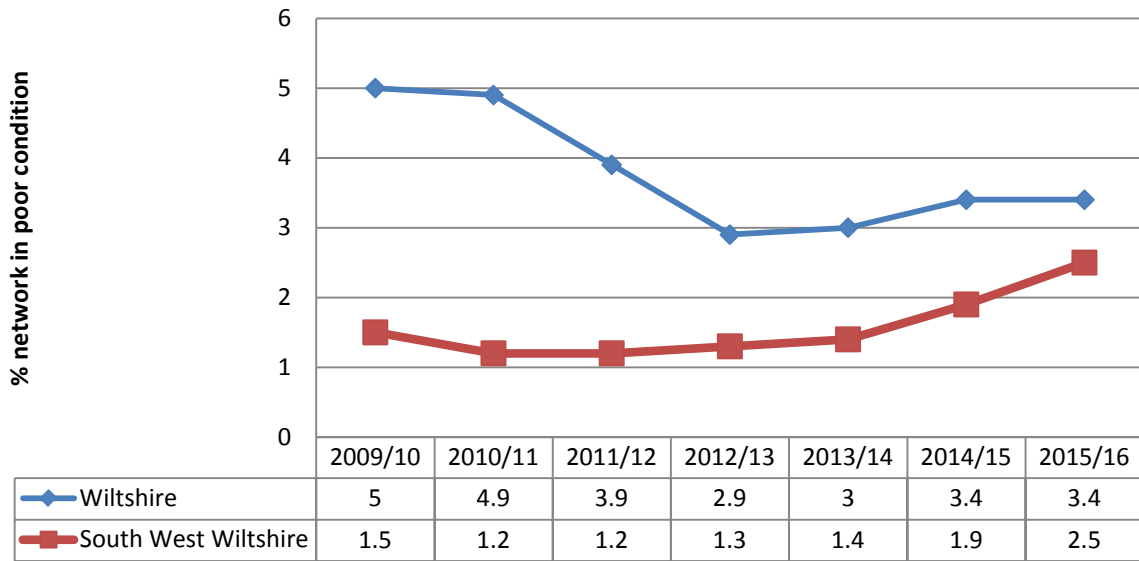
Roads deteriorate in condition because of various factors, including traffic volumes, ground conditions, and weather and drainage issues. Technical surveys of the condition of the highway network are carried out annually and the information is used to help prioritise schemes. Road safety is the priority, and maintaining adequate skid resistance on the busy high speed roads is vital.

The surveys include the use of a vehicle equipped with lasers and cameras to record road surface condition, which allows us to report on road conditions to the Department for Transport and to prioritise maintenance work. Other surveys include measuring skid resistance on the busier roads.

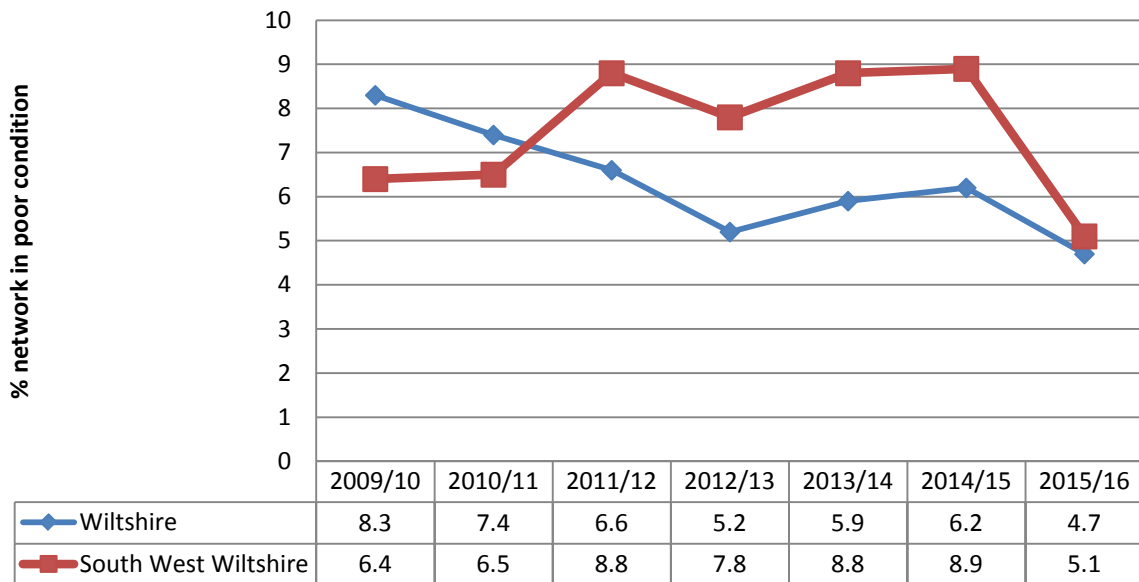
The road conditions in your area are shown below. It should be noted that low numbers are good because it indicates that less road length should be considered for treatment. More detailed information is shown in Appendix A.

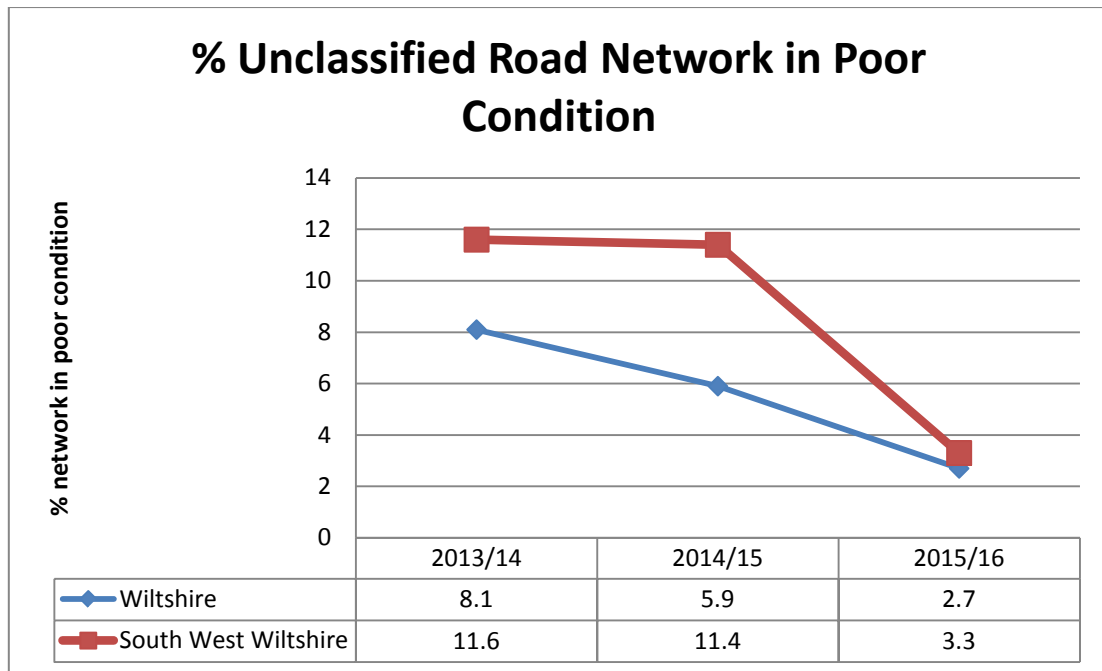


% B Road Network in Poor Condition



% C Road Network in Poor Condition





Integrated transport, bridge and drainage works

Integrated transport

The Council's traffic engineering team work with our contractors to plan and deliver a range of projects to the local community, most notably through the Area Boards and Community Area Transport Groups (CATGs). The schemes range in size and complexity from simple sign installation through to more complex road safety and improvement schemes.

Bridges

The Council regularly inspects its bridges and other highway structures. There is a programme of renewal and refurbishment works to keep them in good condition, as well as having to respond to damage caused by collisions.

Drainage

Programmes of drainage investigations, repairs and flood alleviation schemes are undertaken throughout the year, but the flooding in recent years has meant that there has been a need to respond immediately to flooding issues, as well as dealing with previously identified problem sites. The drainage improvement and flood alleviation work is co-ordinated through the Council's Operational Flood Working Groups that include the Environment Agency, Wessex Water, other organisations and stakeholders.

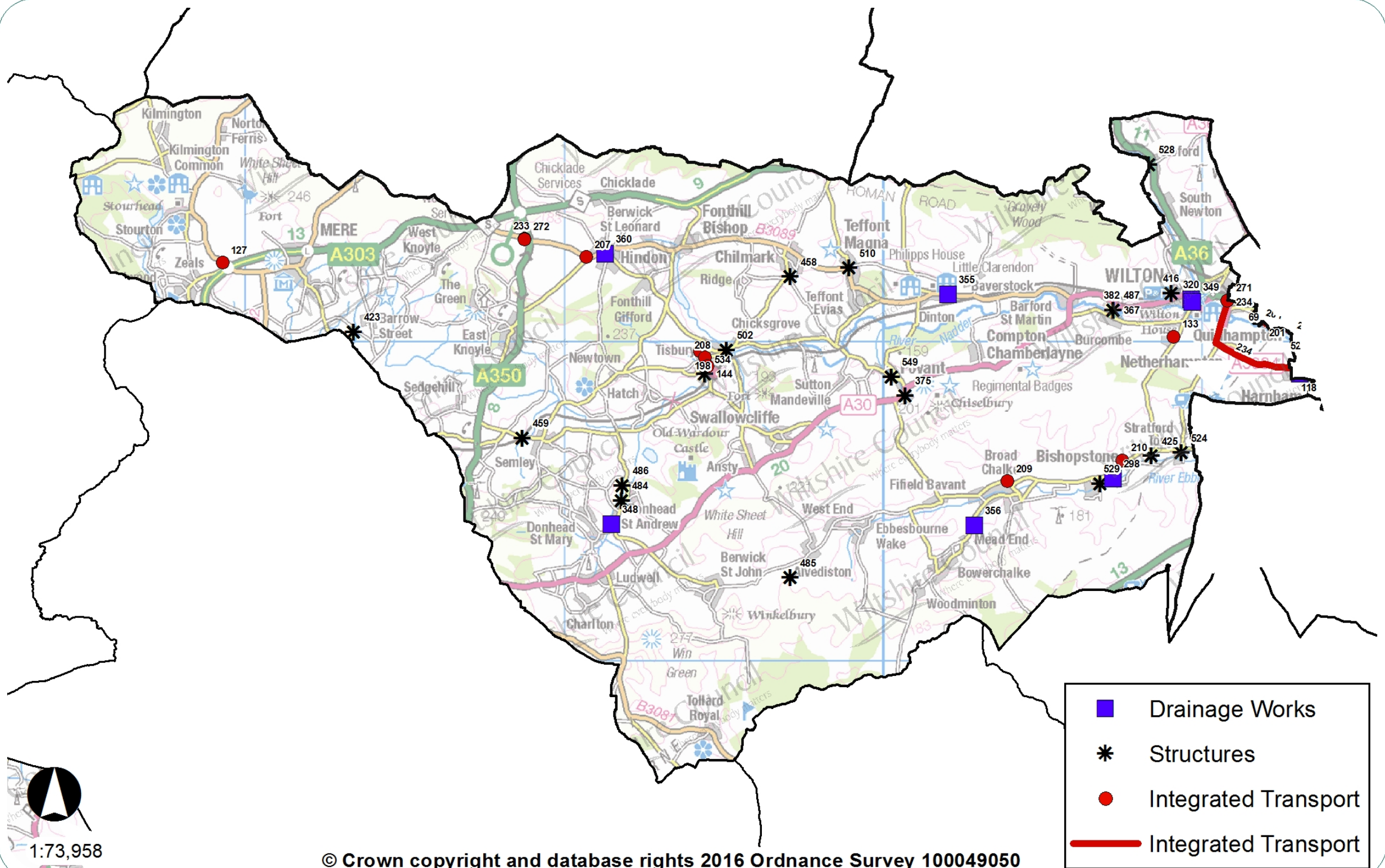
Recent work in your area

The Integrated Transport, Bridge and Drainage schemes carried out in your area since 2015 are listed below.

Plan showing completed integrated transport, bridge and drainage schemes since 2015



South West Wiltshire Area Board



Integrated transport schemes since 2015

No	Location	Description
198	Oare	A345 Southern end gates
207	Hindon	Traffic Management (gateway and coloured surfacing)
208	High Street, Tisbury	20mph speed limit implementation
209	Broadchalke	20mph speed limit implementation
210	Bishopstone	Whitlock Rise warning sign
233	A350	A350 Two Mile down sign erection
234	A3094	A3094 route study completion of works
271	A3094	A3094 route study completion of works
272	A350	A350 Two Mile down sign erection
127	Zeals	Replacement direction sign to Stourhead
133	Wilton	Bulbridge Road Wilton terminal plates
144	Tisbury	Low bridge Warning Sign

Bridge schemes since 2014

No	Location	Description
549	Fovant	General Bridge Maintenance
367	Burcombe Without	Burcombe bridges welding to parapets at both sites
375	Wylde	Brook St Fovant Replace Parapets
382	Burcombe Without	Burcombe parapets - weld repair
416	Wilton	Incursion work - The Hollows
423	Mere	Pimperleaze Bridge, Mere. Replace parapets
425	Bishopstone	Bishopstone Bridges - replace approach rails
458	Chilmark	Portash Bridge, Chilmark. Rebuild Elevation
459	Semley (see Sedgemoor)	Semley Bridge Stone repair and repoint arch barrel
484	Donhead St Andrew	Donhead St Andrew 2nd parapets
485	Donhead St Mary	Ludwell Bridge - scour
486	Donhead St Andrew	Ricketts Mill - vegetation clearance & pointing
487	Burcombe Without	Burcombe 1st parapet railing repairs
502	Tisbury	Tisbury Row Parapet repair
510	Teffont	Teffont Magna reseating of stone in parapet
524	Stratford Toney	Stratford Toney
528	Great Wishford	Great Wishford Bridge, Retaining wall
529	Bishopstone & Stratford Toney	Croucheston 1st & 2nd, Retaining wall
534	Tisbury	Belle Bridge, Vegetation Clearance

Drainage works since 2015

No	Location	Description
298	South West Wiltshire	Reconstructing road and drainage
320	South West Wiltshire	Work with EA on flood barriers
348	South West Wiltshire	Replacement of collapsed system
349	South West Wiltshire	New Gully and connecting pipe work
355	South West Wiltshire	Locate existing carrier and install new gully
356	South West Wiltshire	Rebuild of collapsed riverbank and stabilise road
360	South West Wiltshire	Installation of additional outfall pipe

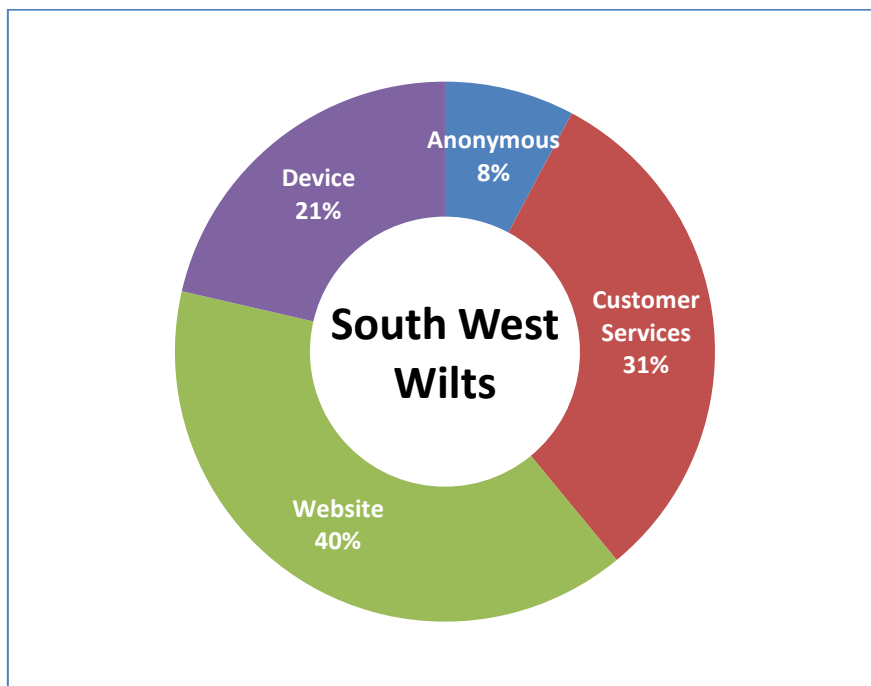
My Wiltshire



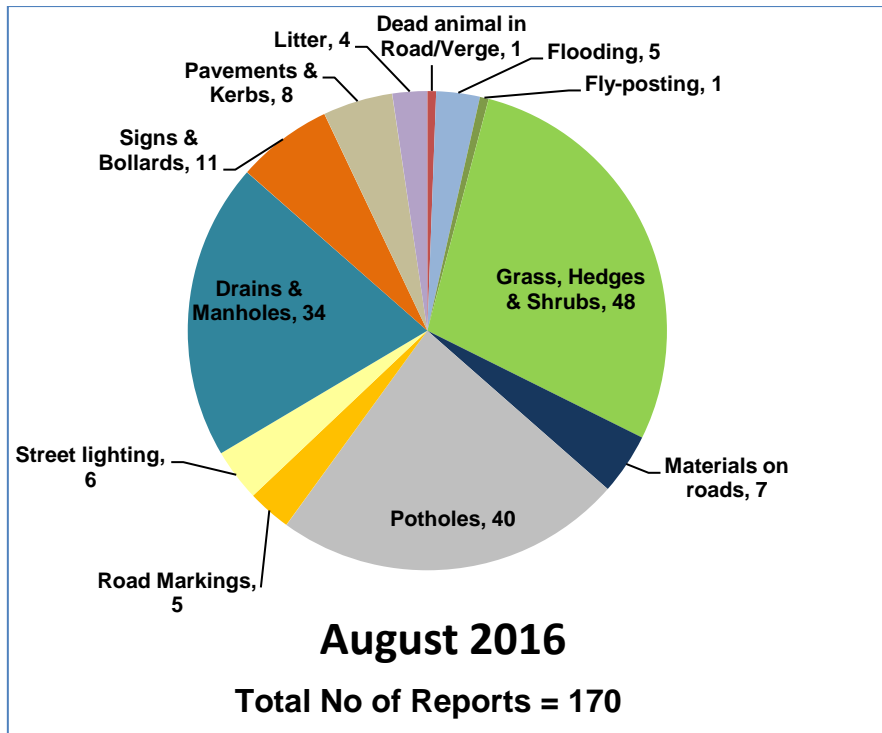
My Wiltshire provides an easy way to report highway issues, including using the Council's website. We have an app so you can report on the go using your smartphone. The My Wiltshire app is available to download at both the [App Store](#) (for iPhones and iPads), from [Google Play](#)[™] (for Android phones) and Windows Store. You can attach information such as photos or videos and pinpoint the location of your report using the mapping software on your phone.

A summary of recent reports in your area is shown below, and further details are shown in Appendix B.

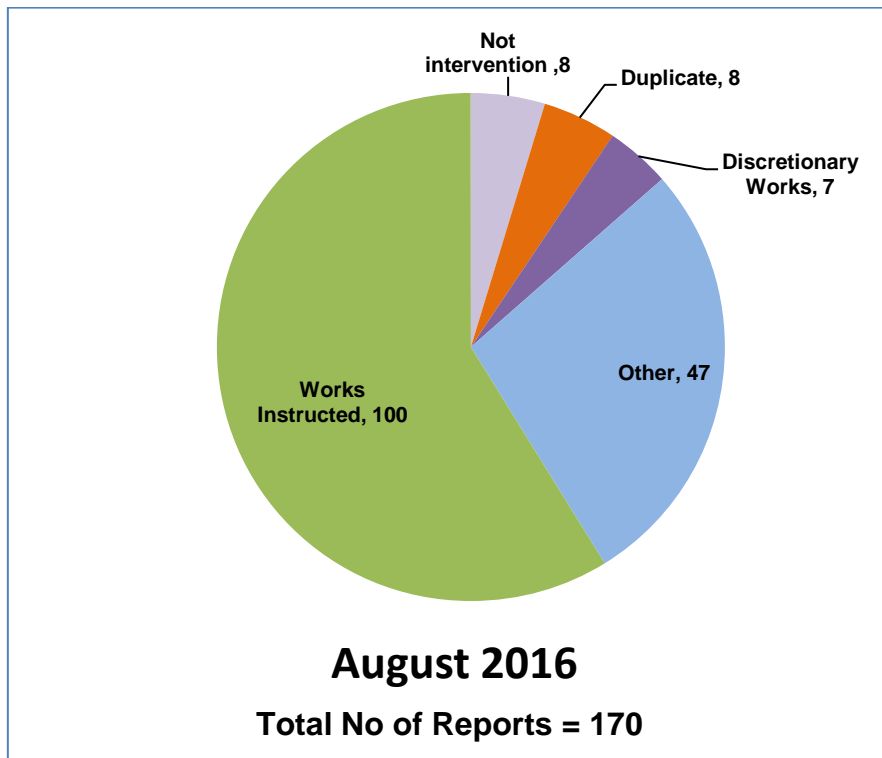
Customer reporting methods in your area



Customer reports in your area for the month of August 2016



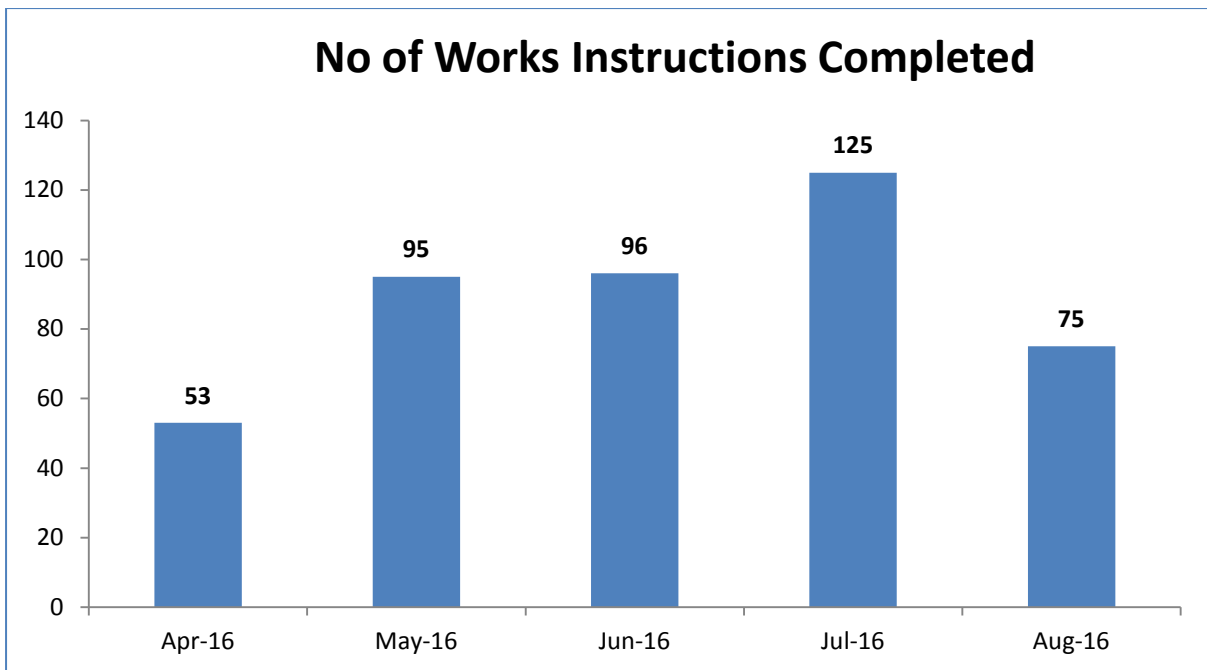
Actions following recent reports in your area



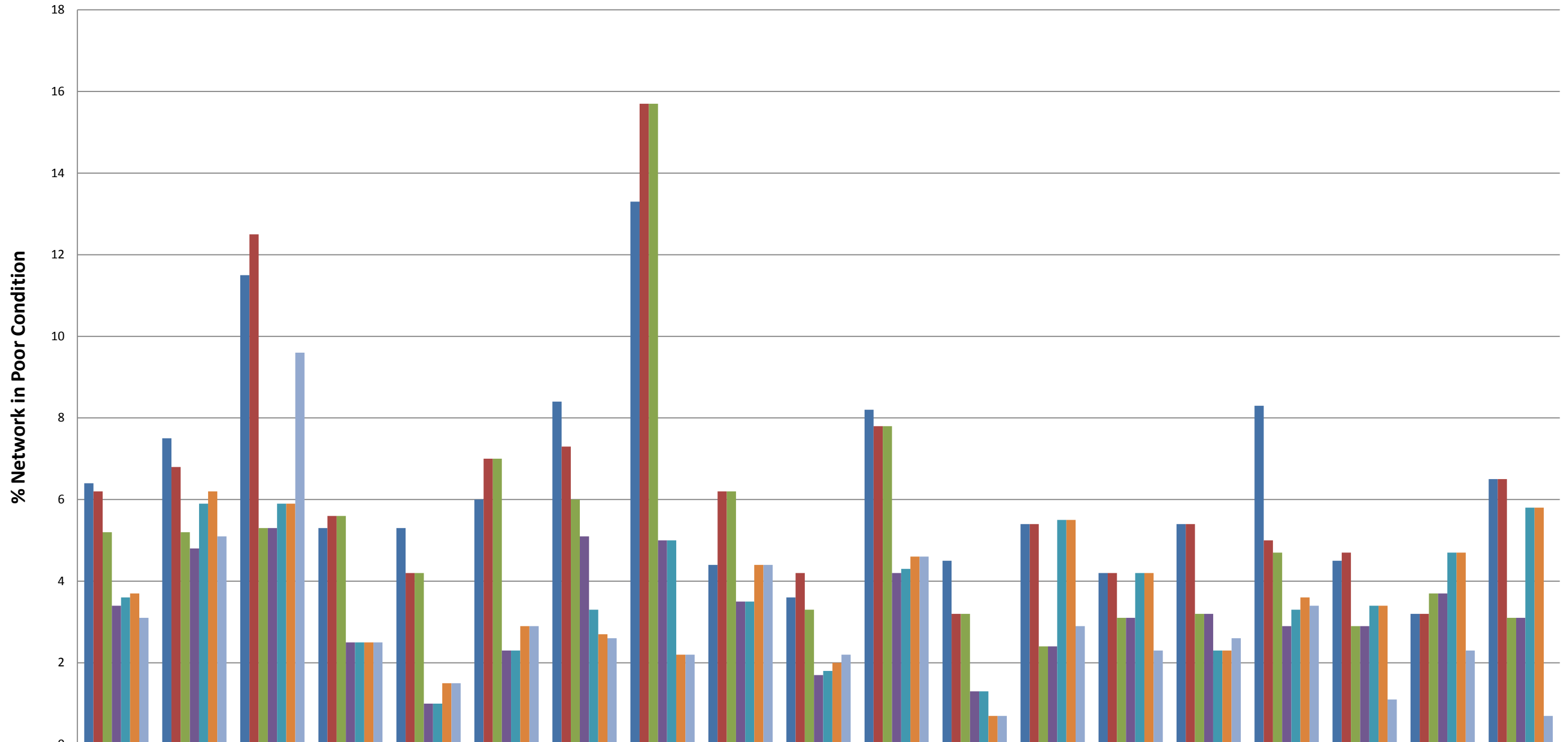
Action definitions

1. **Not Intervention** – the technician has attended site and classified the defect as not meeting intervention levels as per the Highway Inspection Manual 2013 or in the case of streetscene reports, service level agreements.
2. **Duplicate** – a report has already been received in relation to this issue and a works instruction has previously been passed to the contractor to undertake a repair/carry out the necessary works.
3. **Under Investigation** – this issue is currently with a Highways technician or engineer – they may be awaiting information from the customer or the issue requires further investigation e.g. wet weather inspection, drainage survey, exploratory excavation, ownership query.
4. **Discretionary works** – this issue is not a highway safety issue and has been identified as one which falls within the remit of the parish steward scheme.
5. **Other** – the issue has been identified as one which does not require any action by Local Highways. This could be for a number of reasons –
 - the report has been cancelled by the user,
 - there is insufficient information provided to assess the issue and the customer has not provided contact details,
 - the issue is not the responsibility of Wiltshire Council e.g. un-adopted highway, gas/electricity/telephone/water/cable company, Highways England, housing association,
 - the technician attended site and nothing was found at the stated location
 - the issue has been passed to another service within Wiltshire Council e.g. rights of way, bridges.
6. **Works Instructed** – the technician has assessed the issue as requiring works to be carried out and has either dealt with the issue personally or has referred it to the contractor for repair.

Highway defects completed in your area in recent months

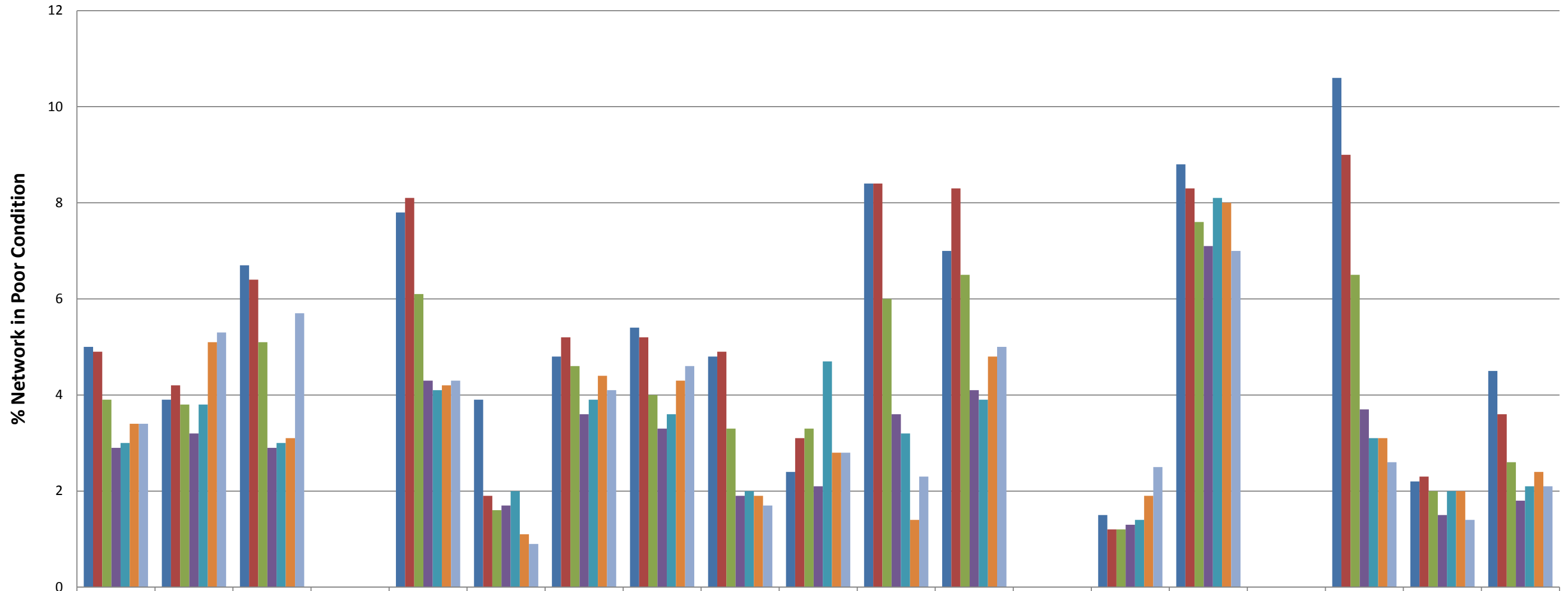


% A Road Network in Poor Condition



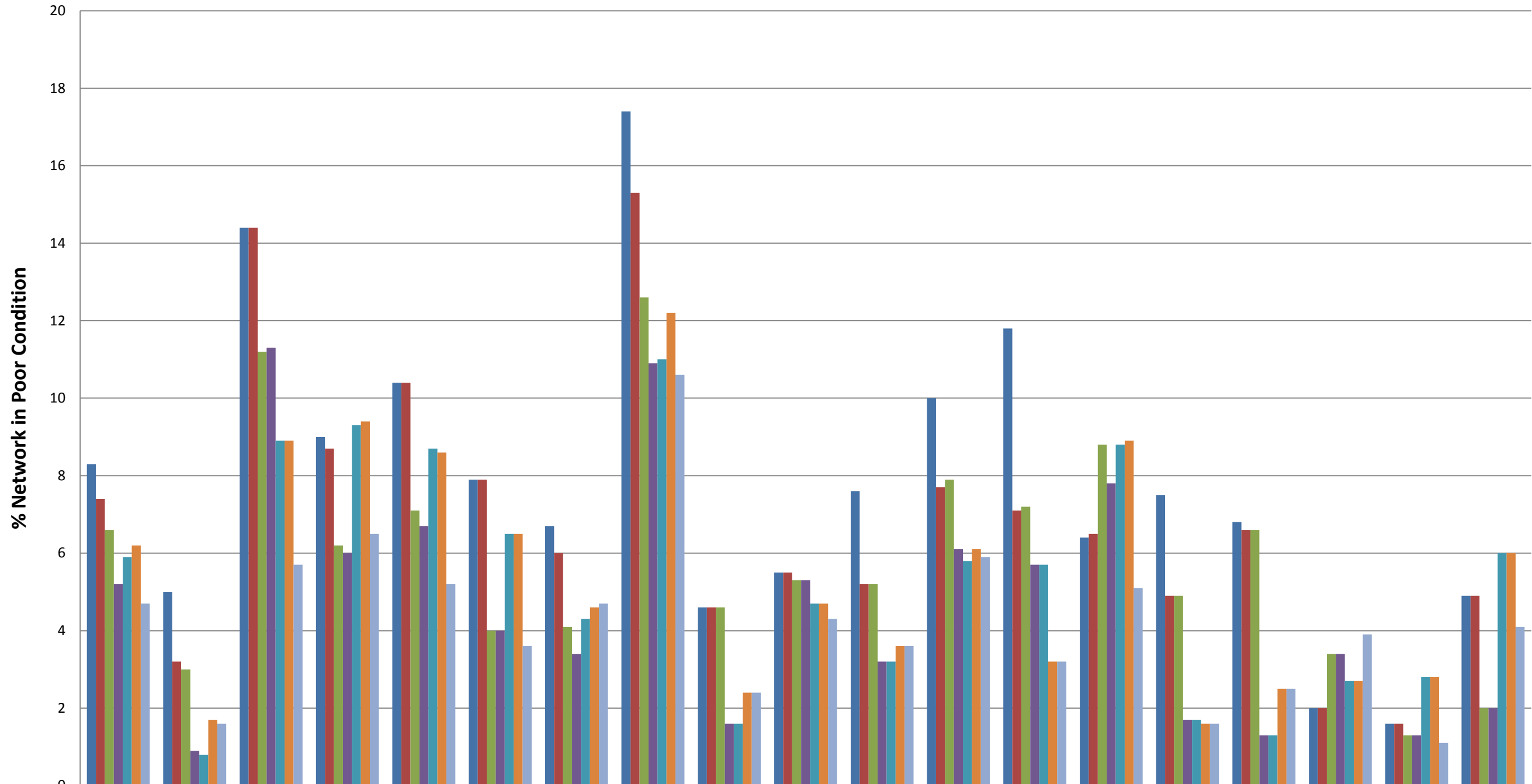
	Wiltshire	Amesbury	Bradford On Avon	Calne	Chippenham	Corsham	Devizes	Malmesbury	Marlborough	Melksham	Pewsey	Royal Wootton Bassett & Cricklade	Salisbury	South West Wiltshire	Southern Wiltshire	Tidworth	Trowbridge	Warminster	Westbury
■ 2009/10	6.4	7.5	11.5	5.3	5.3	6	8.4	13.3	4.4	3.6	8.2	4.5	5.4	4.2	5.4	8.3	4.5	3.2	6.5
■ 2010/11	6.2	6.8	12.5	5.6	4.2	7	7.3	15.7	6.2	4.2	7.8	3.2	5.4	4.2	5.4	5	4.7	3.2	6.5
■ 2011/12	5.2	5.2	5.3	5.6	4.2	7	6	15.7	6.2	3.3	7.8	3.2	2.4	3.1	3.2	4.7	2.9	3.7	3.1
■ 2012/13	3.4	4.8	5.3	2.5	1	2.3	5.1	5	3.5	1.7	4.2	1.3	2.4	3.1	3.2	2.9	2.9	3.7	3.1
■ 2013/14	3.6	5.9	5.9	2.5	1	2.3	3.3	5	3.5	1.8	4.3	1.3	5.5	4.2	2.3	3.3	3.4	4.7	5.8
■ 2014/15	3.7	6.2	5.9	2.5	1.5	2.9	2.7	2.2	4.4	2	4.6	0.7	5.5	4.2	2.3	3.6	3.4	4.7	5.8
■ 2015/16	3.1	5.1	9.6	2.5	1.5	2.9	2.6	2.2	4.4	2.2	4.6	0.7	2.9	2.3	2.6	3.4	1.1	2.3	0.7

% B Road Network in Poor Condition



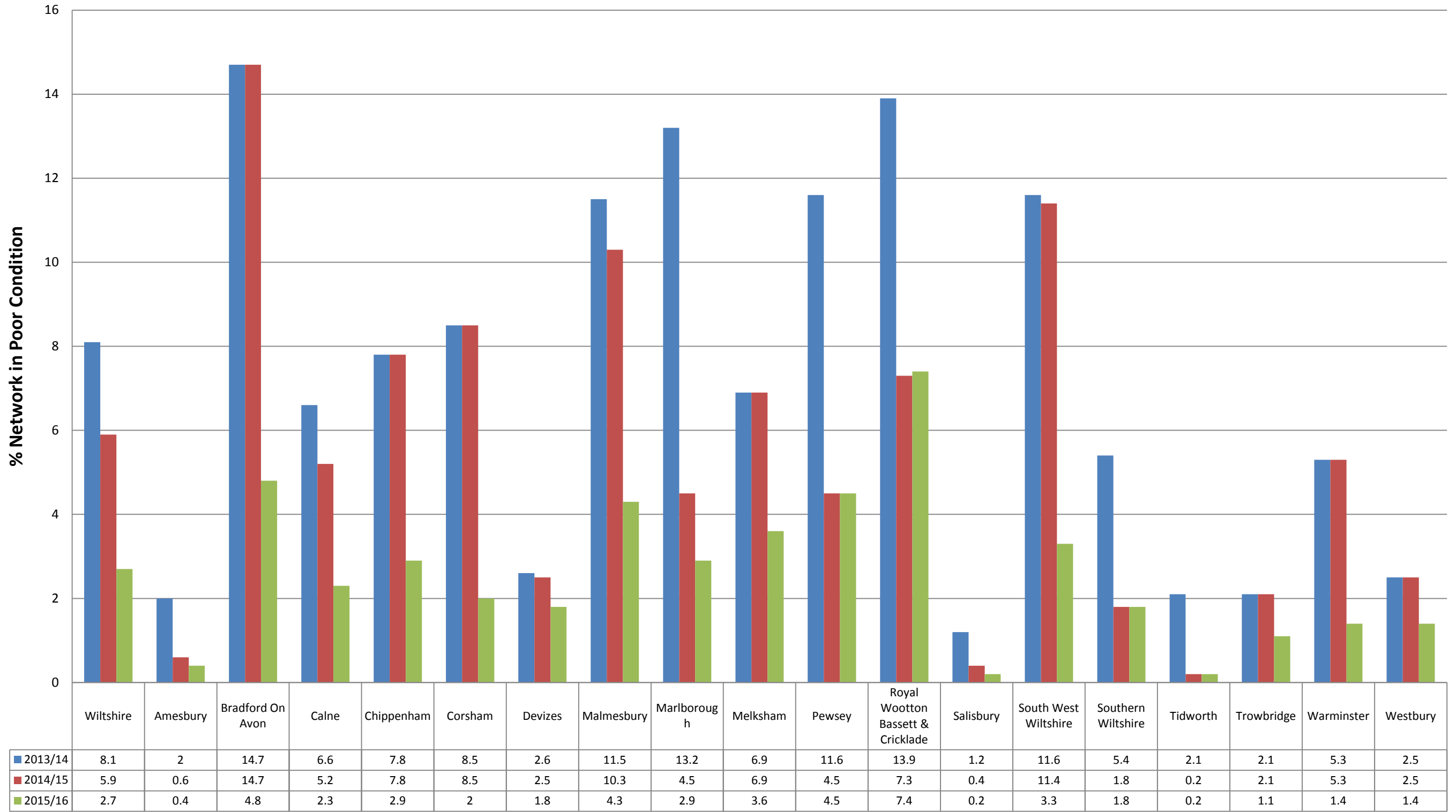
	Wiltshire	Amesbury	Bradford On Avon	Calne	Chippenham	Corsham	Devizes	Malmesbury	Marlborough	Melksham	Pewsey	Royal Wootton Bassett & Cricklade	Salisbury	South West Wiltshire	Southern Wiltshire	Tidworth	Trowbridge	Warminster	Westbury
■ 2009/10	5	3.9	6.7	0	7.8	3.9	4.8	5.4	4.8	2.4	8.4	7	0	1.5	8.8	0	10.6	2.2	4.5
■ 2010/11	4.9	4.2	6.4	0	8.1	1.9	5.2	5.2	4.9	3.1	8.4	8.3	0	1.2	8.3	0	9	2.3	3.6
■ 2011/12	3.9	3.8	5.1	0	6.1	1.6	4.6	4	3.3	3.3	6	6.5	0	1.2	7.6	0	6.5	2	2.6
■ 2012/13	2.9	3.2	2.9	0	4.3	1.7	3.6	3.3	1.9	2.1	3.6	4.1	0	1.3	7.1	0	3.7	1.5	1.8
■ 2013/14	3	3.8	3	0	4.1	2	3.9	3.6	2	4.7	3.2	3.9	0	1.4	8.1	0	3.1	2	2.1
■ 2014/15	3.4	5.1	3.1	0	4.2	1.1	4.4	4.3	1.9	2.8	1.4	4.8	0	1.9	8	0	3.1	2	2.4
■ 2015/16	3.4	5.3	5.7	0	4.3	0.9	4.1	4.6	1.7	2.8	2.3	5	0	2.5	7	0	2.6	1.4	2.1

% C Road Network in Poor Condition



	Wiltshire	Amesbury	Bradford On Avon	Calne	Chippenham	Corsham	Devizes	Malmesbury	Marlborough	Melksham	Pewsey	Royal Wootton Bassett & Cricklade	Salisbury	South West Wiltshire	Southern Wiltshire	Tidworth	Trowbridge	Warminster	Westbury
2009/10	8.3	5	14.4	9	10.4	7.9	6.7	17.4	4.6	5.5	7.6	10	11.8	6.4	7.5	6.8	2	1.6	4.9
2010/11	7.4	3.2	14.4	8.7	10.4	7.9	6	15.3	4.6	5.5	5.2	7.7	7.1	6.5	4.9	6.6	2	1.6	4.9
2011/12	6.6	3	11.2	6.2	7.1	4	4.1	12.6	4.6	5.3	5.2	7.9	7.2	8.8	4.9	6.6	3.4	1.3	2
2012/13	5.2	0.9	11.3	6	6.7	4	3.4	10.9	1.6	5.3	3.2	6.1	5.7	7.8	1.7	1.3	3.4	1.3	2
2013/14	5.9	0.8	8.9	9.3	8.7	6.5	4.3	11	1.6	4.7	3.2	5.8	5.7	8.8	1.7	1.3	2.7	2.8	6
2014/15	6.2	1.7	8.9	9.4	8.6	6.5	4.6	12.2	2.4	4.7	3.6	6.1	3.2	8.9	1.6	2.5	2.7	2.8	6
2015/16	4.7	1.6	5.7	6.5	5.2	3.6	4.7	10.6	2.4	4.3	3.6	5.9	3.2	5.1	1.6	2.5	3.9	1.1	4.1

% Unclassified Road Network in Poor Condition



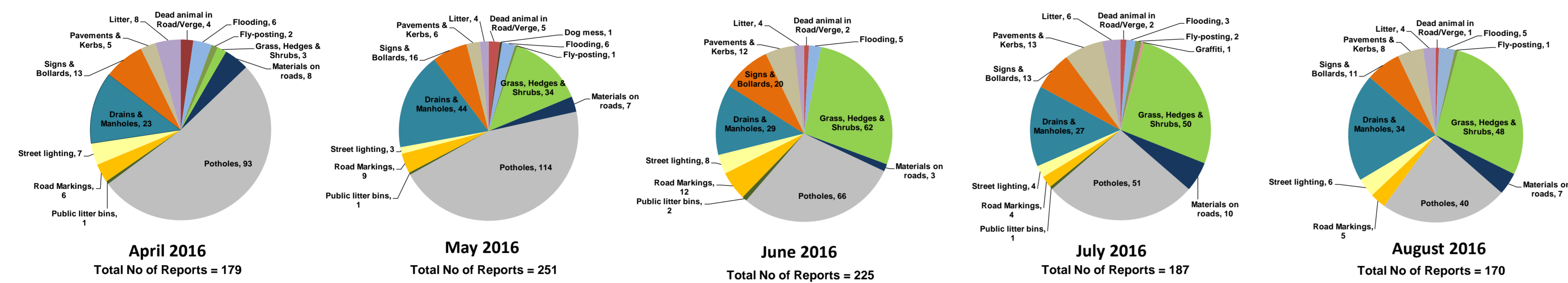
Appendix B: My Wiltshire Statistics



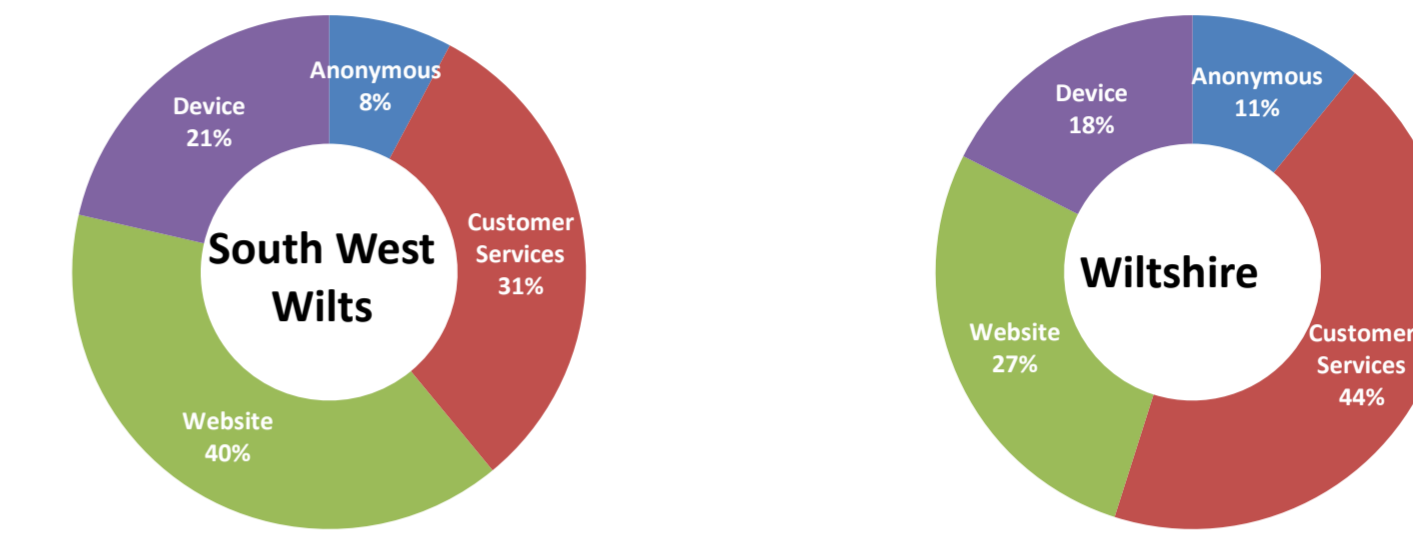
South West Wiltshire Area Board



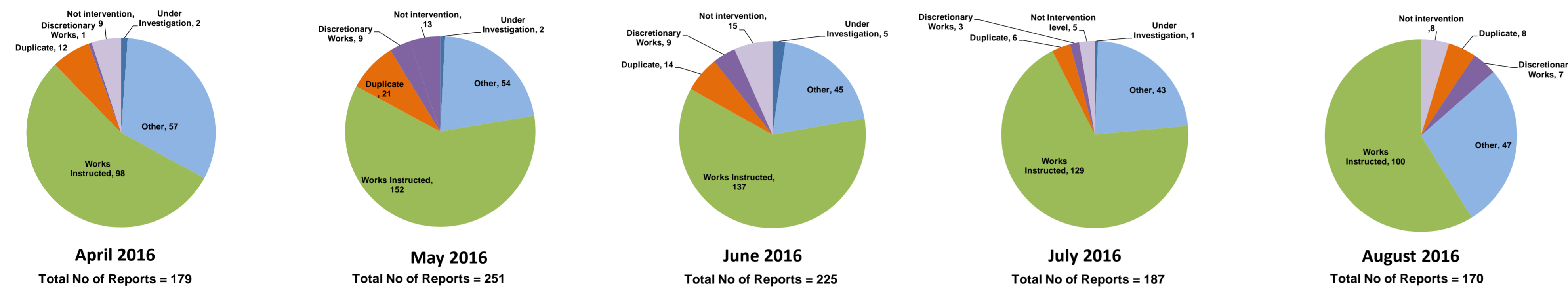
Customer Reported Issues



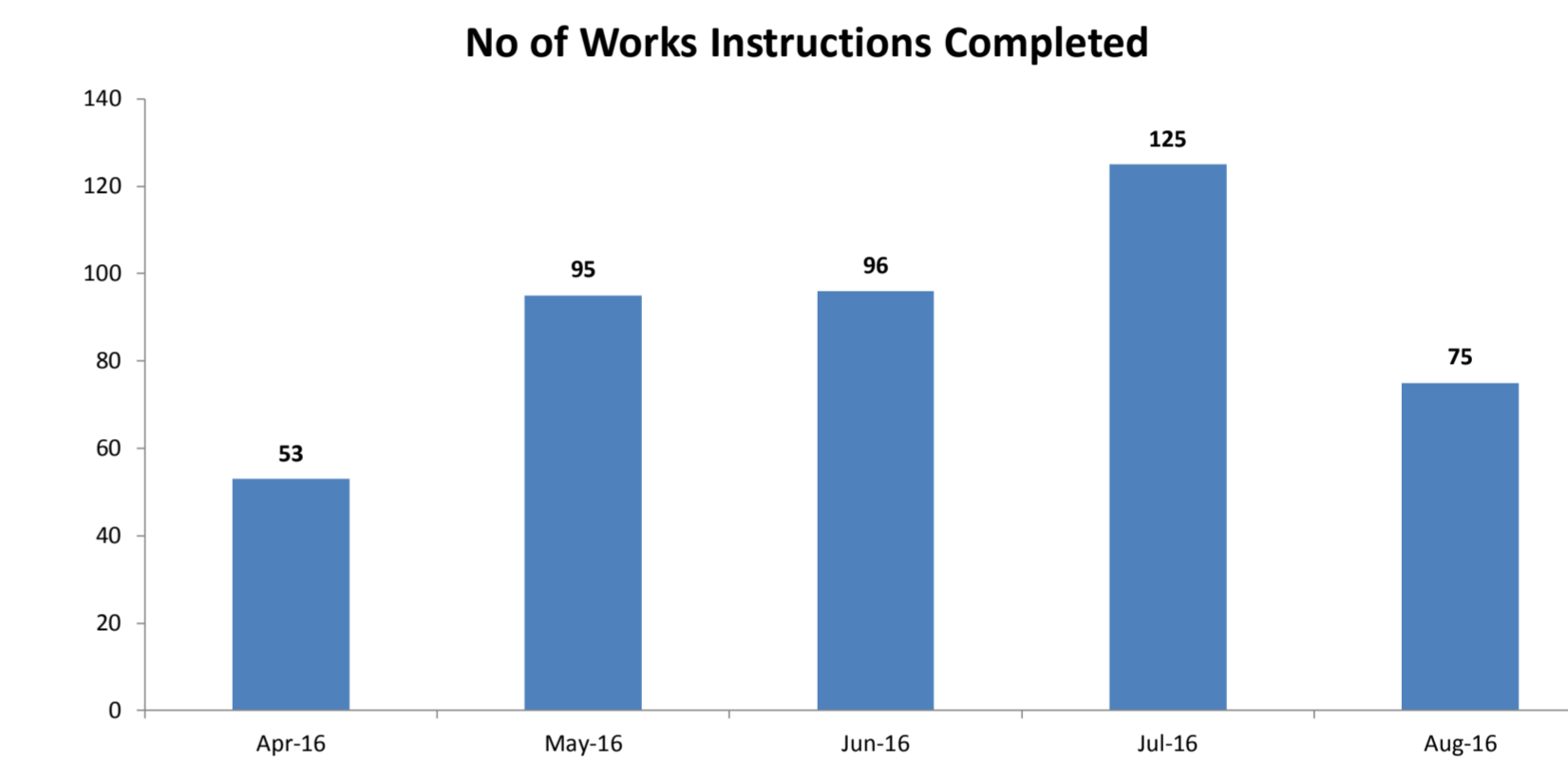
Reporting Channels



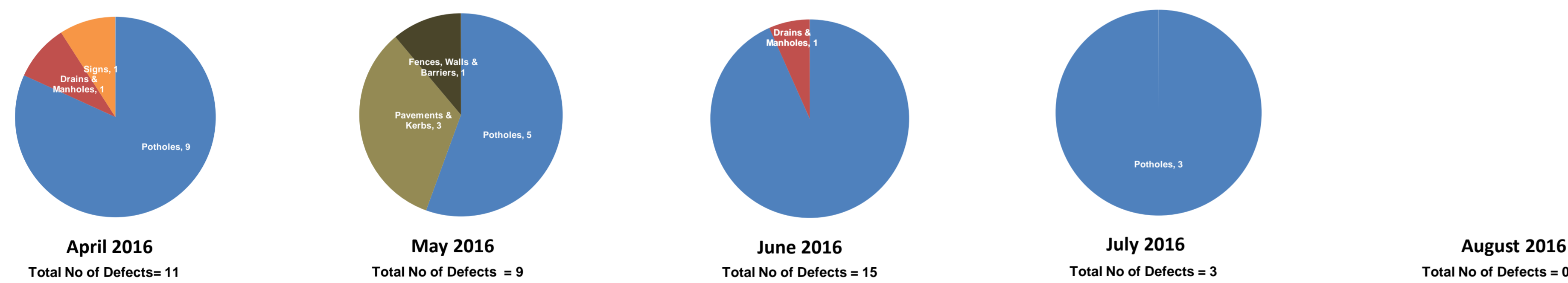
Customer Call Outcomes



Completed in Month



Safety Inspections



APPENDIX 2

Road	South West Wiltshire	Recommended Treatment	Estimated Length (m)	Est Area of Site (m²)
A360	A360 New Cut Crossroads junction The Avenue	Surfacing	80	616
A350	A350 Sedgemoor at Hayes Farm	Retexture	430	1,591
A360	A360 Stoford Crossroads	High Friction & Retexture	50	168
A3094	A3094 Wilton to Netherhampton	Surface Dressing	3,323	12,981
A354	Coombe Bissett	High Friction	50	175
A3094	A3094 Netherhampton Road at Salisbury Livestock Market	Retexture	160	1,248
B3089	B3089 Berwick St Leonard	Retexture	250	750
B3089	B3089 Hindon Road/Chilmark	Surfacing	813	5,288
B3092	B3092 north of Stourton Lane at Coldcot Farm	Retexture	110	352
B3089	B3089 Fonthill Bishop	Retexture	190	608
B3089	B3089 Hindon Rd nr Baverstock Lane	Retexture	110	330
B3089	B3089 Salisbury Rd, Teffont Magna	Retexture	310	899

Road	South West Wiltshire	Recommended Treatment	Estimated Length (m)	Est Area of Site (m²)
A350	A350 North of Staggered Cross to A303 Southbound Slip	Retexture	840	3,192
C12	C12 High Road Bishopstone at Flamstone St	Retexture	50	150
C309	Tokes Lane	Recycling	2,482	7,626
C41	Druley Hill	Recycling	911	6,195
C12	Broadchalk, Bishopstone and Coombe Bissett	Surface Dressing	4,322	25,560
C12	C12 Stratford Tony East	Retexture	470	2,820
C12	C12 West of Church Lane Bishopstone	Retexture	130	780
C25	Ansty High Street north of Kings Lane	Retexture	90	387
UC	Tuckingmill West Tisbury	Surfacing	490	2,029
UC	Knighton Road Broadchalke	Surface Dressing	1,590	5,816
UC	Misselfore to Cow Down Hill/Hants Border	Surface Dressing	1,825	5,906
UC	Ansty Coombe NE into Kings Lane	Surface Dressing	747	3,243
UC	Sutton Bottom	Surface Dressing	1,133	3,843
UC	New Road NE to Warminster Hollow	Surface Dressing	1,627	8,266

Road	South West Wiltshire	Recommended Treatment	Estimated Length (m)	Est Area of Site (m²)
UC	Touchorne Lane & The Green	Surface Dressing	928	3,492
UC	Wet Lane SE into Pimperleaze Road	Surface Dressing	2,058	7,383
UC	Charnage A303 South into Barrow Street into Pimperleaze Road	Surface Dressing	6,524	14,226
UC	Cunnage Lane	Surface Dressing	637	2,116
UC	Moor Lane	Surface Dressing	3,284	16,500
UC	Black Lane	Surface Dressing	893	3,780

Minutes of the Wilton Town Team meeting held on Thursday 16th February 2017 at 7.00pm in the Council Chamber

Present:

Wilts Cllr Peter Edge (Chairman), **PE**
Cllr Phil Matthews (Town Council) **PM**
Gary Nunn (Community Events), **GN**
Andy Kinsey (Wilton & District Business Chamber)**AK**
Jonathan Greening (Minister Baptist Church) **JG**
Zoe Cupit (Wilton Town Coordinator, minute taker) **ZC**
Jaki Farrell (Seeds4Success) **JF**

Apologies Sue Van Leest (Our Wilton) Steve Harris (Area Board Community Engagement Manager) Rev'd Mark Wood (Rector, Parish Church) : Mark Pountain (Wilton Community Land Trust)

1. **Chairman's Welcome and apologies** - Peter Edge welcomed all to the meeting. Apologies received were noted as above
2. **Approval of the minutes of the previous meeting held in November**
Approved
3. **Matters arising**
Flagpole – The new Flagpole is being installed Thursday 23rd February.
St Marys History Project – will anyone be representing the project at future meetings?

4. Updates

i. Town Trail – Sent by the Town Clerk - The updated draft map has been sent out, and comments received fed back to Cityscape. Installation will now probably in be March. Any additional noticeboards required need to be ordered as soon as possible. **AK** asked that a final draft be seen before printing goes ahead.

ii. Gateway Signs – Update from **PE**, the seven signs have been ordered and locations decided. **PE** to confirm with sponsors that all are still willing to invest.

iii Wilton Parkway - The Parkway Progress presentation on Wednesday 15th February was well attended. Paul Johnson from TransWilts was present and there was generally a positive response. Proceeding with Grip Stage 3 moving towards Stage 4.

(GRIP - Governance for Railway Investment Projects is the process that Network Rail uses to manage developments to the network. There are 8 stages.
Stage 3.– Assesses potential options and selects the most appropriate one to deliver stakeholders' requirements.
Stage 4. – The implementation of the option selected during the third step.)

iv. The CCTV is hoped to be completed in the new future. The equipment has been ordered and contractors are currently working on the Salisbury Control room.

v. British Cycling Race – The race will not go ahead in Wilton this year. Decisions were made too late leaving little time for effective planning. It is hoped to move forward with the event next year.

vi. *Community Bus Scheme* – **AK** The Business Chamber has been promised £4000 (£3000 subject to providing a business case) to hire a minibus for 3 months. This is a good way to start and see how many people use it. The Business Chamber is looking for Minibus Committee members. **ZC** forwarded to **AK** the availability of minibuses in the area information. Business Chamber now leading on this.

The project is currently called the Wheels4Wilton scheme this might have to change as it's very similar to The Wilton Wheelers, the local cycling group.

vii. *Town Coordinator* – **ZC** Confirmed 18th June as the date for the Big Lunch which Claire Ellard from Wilton Shopping Village has very kindly offered to host. The programme is still to be finalised but will feature food, music, entertainment for the kids and stalls from local charities, community groups, the school and youth club.

The week will start with pop-up shops to fill the town in June, culminating in The Big Lunch on Sunday. Pop up shops involve offering shop space for short term let. The aim is for pop up occupiers to have a positive experience and commit longer term to being in Wilton. Please help spread the word and encourage your groups to get involved with this event. If you know anyone who might want a pop up shop or a stall at the BIG Lunch please pass on my details. **I would also like help if anyone has information on who the empty shops are owned or managed by.**

Sue and I met with Sarah Hunter the new editor of Wilton Parish News. She will be featuring a piece on myself in the March edition, with a follow up on the CLT in April and monthly updates on town activities.

George Brutton (CLT Board member) and I attended the Planning in Communities Workshops at the Art Centre on Wednesday 15th Feb. The event was led by Wiltshire Community Land Trust and Community First. The event was attended by local members of communities who wanted to find out more about The Planning Process, Community Led Housing and Engaging with the Community and developers. The event was informative and I was able to hand out CLT Membership application forms.

I hand delivered 188 letters to the Redrow Residents welcoming them to Wilton and making sure that as many people know about the wide range of activities and opportunities happening in Wilton.

Roadshow - instead of expecting groups, or residents to come to Our Information evenings Sue and Kerry from Our Wilton and myself will go to them. I have contact local group to arrange times to visit to spread the word about projects and update them on Wilton Hill – the response has been very disappointing. Will try again.

I am delighted to have launched the brand new Wilton Community Land Trust (WCLT) Facebook Page! Where you can keep updated on CLT and Wilton Town activities, initiatives and events. LIKE and FOLLOW us at - [facebook.com/Wilton Community Land Trust](https://www.facebook.com/WiltonCommunityLandTrust). Since launching a total of 412 people have either seen, liked or followed our posts.

After the success of Forest Forge's Elves and The Shoemaker Anna (who played Mrs. Shoemaker) would like to bring her next production to Wilton. The proposed date is 25th March, waiting for room confirmation at the Community Centre.

viii. *Our Wilton* – **SvL** sent the following report

A busy month working towards applying for a number of grants for the following:
Fit out for Veterans Accommodation
History Project (working with Heritage Society, veterans and civil servants, schools etc)
Upcycling Project in new Alabare Emporium in Wilton
Greenspace Project for Wilton Hill
Community Bike Project
Enterprise Hub build and fit out
Funding an RFEA post to cover Wiltshire veterans to be based at Wilton to support veterans employment
Breaking ground announcement imminent, with significant press coverage expected.
Working with Zoe at CLT to support event delivery.
Visit from Stratford Council in March to look at possible replication of the project there.

5. Brief Updates from member bodies

a. **JF** - Seeds4Success, run a number of projects for local young people.

Tuesday is junior youth club in Wilton. Wednesday is Young Leaders Programme in Mere Thursday is project night in Wilton. Friday is Open Night in Mere. Seeds4Success also provide transport from the Wilton area for young people to access other opportunities they run. **JF** asked if they could store bikes in the Weights and Measures building **PE** to action In 2016 Seeds4success worked with almost 150 young people. **JF** also runs the Bridging Project. This is for young people with disabilities or learning difficulties, supported by a small team of peer leaders from the leadership programme as well as youth workers. The Bridging Project runs at Mere Youth Development Centre on a Tuesday. **Jaki** is looking for Trustees particularly with experience in Accounts and Health and Safety. And is hoping to set up a Friends of Seeds4Success to help with fundraising. For more information contact - jaki@seeds4success.org.uk **JF** would like more information from **SvL** about the Community Bike Project.

b. **JG** (Minister Baptist Church) – The monthly meal event for older residents is thriving with 50 participants last week. **JG** is encouraged that also very busy is the Parent and Toddler group and the ‘Oasis’ Coffee morning on a Thursday.

c. **AK** – (Wilton & District Business Chamber) – From 3rd March, every 1st Thursday of the month a Market Stall is available for Wilton Rotary, Our Wilton, Wilton Chamber, and Community Land Trust to give away leaflets etc and volunteers can engage with the community.

There is a VIP lunch March 24th 12 – 12.30pm at South Wilts Golf Club. MEP Julie Girling is guest speaker.

The Business Chamber is looking for Minibus Committee members.

d. **GN** (Community Events) – Pleased to announce that the Community Centre has two new recruits - a Trustee and Treasurer.

e.PM (Town Council) – The council agreed the precept requirements for 2017/2018. This would mean a rise of £9.75 on a Band E property. The adult gym and children’s play equipment, including a climbing course, has been ordered.

f.SH (Area Board Community Engagement Manager) sent the following report - The next Area Board meeting is on 8 March 2017, 6.30pm at the Nadder Centre in Tisbury. This will be the last meeting of this financial year and before the local authority elections in May. I am going to give a presentation/update on Safe Places to Wilton businesses at the WDBC breakfast networking meeting on 14 March 2017, to hopefully encourage some to sign up to the scheme.

The official opening for the Nadder Centre will take place on Thursday 2nd March 2017 from 3.30-5.30pm, all are welcome to attend, refreshments will be available as well as a range of activities/display stalls showcasing what the centre has to offer. More details will be made available very shortly.

I look forward to receiving the minutes in due course; particularly interested in any developments with the proposed Wheels4Wilton scheme as the Area Board agreed to contribute £3,000 towards the project at its meeting in February, and also whether the cycle race is going to be viable for this year.

g. PE (Wilton Community Land Trust) – The CIC Board Meeting is Thursday 23rd February.

6. Any Other Business

7. Date of next meeting

Thursday 16th March 2017 7.00pm in the Town Council Chamber.



Area Board Update - February 2017

Healthwatch Wiltshire is a local independent organisation which exists to speak up for people on health and care. If you have used a service recently then we would like to hear from you. We use what people tell us when we meet with the commissioners and providers of services to make sure that they take account of your views and experiences.

S.A.I.L.

The Your Care Your Support Wiltshire (YCYSW) website team are adding forms to help people do some of the business of social care online. Recently we added a

S.A.I.L (Safe and Independent Living) form. S.A.I.L is a partnership between Dorset & Wiltshire Fire & Rescue Service and Wiltshire Council to offer anyone an assessment promoting safe and independent living in your own home. A Dorset & Wiltshire Fire & Rescue Service representative can offer a Fire Safety risk assessment, safety advice, advice on night-time routines, making an escape plan, checking smoke alarms, and signpost to benefits advice and debt advice. To request a visit, you can log in to Your Care Your Support, and with an activated account, complete the SAIL request form online: www.yourcareyoursupportwiltshire.org.uk/care-and-support/safe-and-independent-living.aspx.



The Pressure on Beds

The national media has been full of stories about pressures on the NHS. In Wiltshire, hospitals and the NHS Wiltshire Clinical Commissioning Group have been urging people to only go to Emergency Departments if necessary. You are asked to consider other services, such as your GP, minor injury units or your pharmacist to ask if they can treat your condition.

We have been hearing peoples' experiences of being discharged from hospital to other care settings around the county. We heard that, for most people, the system is working well with 71% of people saying they were 'very satisfied' or 'satisfied' with their discharge. However, we have also heard of problems from people who didn't feel informed or included in decisions about their care, and difficulties arranging care at home for people who need it. Problems with transport to get home, and knowing who is responsible for care after discharge were also issues for some of the people we spoke to. Our full report has been published at www.healthwatchwiltshire.co.uk/wp-content/uploads/2017/01/Transfers-of-Care.pdf. We have fed this information back to the people who run the services, so they know where the system is and is not working well.

Contact us:

Tel 01225 434218

info@healthwatchwiltshire.co.uk

www.healthwatchwiltshire.co.uk

Local Youth Network Management Group Record

Area	South West Wiltshire LYN				
Date	23/2/17	Times	7.15-8.30pm	Venue	Wilton Youth Centre
Present	Emily, Natanya, Georgia, Jamie Mark, Jaki, Steve, Bridget, Josh Rob Guy				
Apologies	George, Zita				
Agenda Items					
1	Welcome and Apologies				
2	Notes/actions from meeting held on 23.11.16				
3	Salamander scheme – Rob Guy, Youth Intervention Manager, Dorset & Wiltshire Fire & Rescue.				
4	ESF Links to Work				
5	Salisbury Transition City CIC update				
6	Offer for young people at the Enterprise Hub (Wilton Hill development)				
7	Area Board funding update				
8	Monday evening offer at the Nadder Centre				
9	AOB				
Decisions					
1					
2	<p>Area Board has agreed Anybody Can Cook sessions that were going to be held in Chalke Valley will now be done at Mere for young people who are NEET or at risk of exclusion, will take from across the whole area and try to link with schools. Jaki liaising with ABC.</p> <p>Jaki explained consistent issue with SWW students being in the minority at schools in the surrounding area and therefore not much focus on students who come from SWW.</p>				
3	<p>Rob Guy gave overview: Personal development programme – building confidence skills. Participants get to experience all fire training scenarios. Deliver 7/8 per year. Do have funds – could put a Salamander scheme on with additional funding. Doing an 8 week course delivery in Westbury (total cost is £6,800), flexible in terms of how it can be delivered. Activities will be dependent on facilities at that station. Won't have capacity until at least June. Youth co-ordinator for Wiltshire is Christine, also have buses to provide transport if necessary.</p> <p>Do have reserves to match fund – look to take 15 young people on a course. Criteria is that they need confidence, raise self-esteem,</p> <p>Opportunity to promote local retained firefighters too. Easier to do all in a week</p>				

	<p>but can be led by requirements. Summer holidays would be good. 24 July?</p> <p>Must be 12+ for insurance purposes.</p> <p>Group agreed to propose that £3,400 to be ring-fenced for course in next year.</p>
4	<p>Jaki gave update re. Building Bridges: Target groups. Some offering mentoring, support work, group work. Cannot be in paid employment. Target is to work with 15 young people per year in SW Wiltshire. Steve gave info re. Links to Work. Cannot be used for young people already benefiting from Building Bridges. ACTION – Steve to circulate information on Links to Work.</p>
5	<p>Jaki advised couple of young leaders watched the Home film. Young people reported it was quite depressing and also close to being out of date. Steve shared update from Mike who had suggested an alternative film with a more positive message. It would cost £100 to buy the rights in order to show it. ACTION – Steve to circulate ‘Tomorrow’ preview, group members to feed back. Mike has also advised that the next Sustainable Salisbury event is due to take place on 3 June 2017.</p>
6	<p>Steve gave brief update on Enterprise Hub. Potential opportunities for young people to be explored in future.</p>
7	<p>Allocation for 2016/17 has been used. New allocation will be received for 2017/18, figures to be confirmed.</p>
8	<p>Jaki gave update: Monday night allocation funded by Area Board. Consistent programme will come during June following bank holidays. Will run in holidays when centre is open. Transport being provided. Young people coming from Bulbridge, Barford, Dinton on one minibus. Zeals, Mere, Hindon on the other. From Tisbury/Swallowcliffe getting 6-7 dropped in. Trampolining has limited numbers. Need to review after 6 months.</p>
9	<p>Mark advised concern over future arrangements of youth building. Happy with current sessions provided. Jaki advised some rubbish has been left outside building for 18 months. ACTION – Steve to liaise with Mike Dawson (Estates) / Wilton Town Council for update on what is happening with building.</p>
Recommendations to Area Board	
1	<p>The LYN recommends to the South West Wiltshire Area Board that £3,400 be allocated towards costs associated to run a Salamander scheme in 2017/18.</p>

SOUTH WEST WILTSHIRE COMMUNITY AREA TRANSPORT GROUP 8 FEBRUARY 2017

	Item	Update	Actions and recommendations	Who
1.	Attendees and apologies			
	Present:	Roy Sims, Sheila Shepperd, Brian Wessely, Malcolm Cull..., Tim Martin, Clare Churchill, Catherine Purves, Frank Freeman, Richard Mitchell, Bev Ford, Mike Ash, William Holmes, Patrick Boyles, Jenny MacDougall Wiltshire Councillors Tony Deane, Peter Edge, Jose Green, George Jeans, Tim Woolford, David Button, Julie Wharton, Spencer Drinkwater		
	Apologies:	John Wigg, Sandra Harry.		
2.	Notes of last meeting			
		The minutes of the previous meeting held were agreed at the South Western Wiltshire Area Board meeting on Wednesday 7 December 2016. <i>Link can be found on the Wiltshire Council website here</i>		
3.	Financial Position			
		The final finance sheet was presented. There is currently £1879 unallocated. The Area Board agreed to ring fence £10k which has not been accounted for in the above figure as this has been set aside for renewal of white lines.		

SOUTH WEST WILTSHIRE COMMUNITY AREA TRANSPORT GROUP 8 FEBRUARY 2017 ACTION NOTES

4.	Substantive Bid			
a)	New Road, Zeals (Mere) 30mph speed limit & traffic management measures.	CATG agreed to set aside £10k for substantive bid & PC funding £5000. The substantive bid was successful, the Cabinet Member report can be found here .		JW
5.	Top 5 Priority Schemes			
a)	Issue 4078 & 4504 Hindon The Dene/High Street Additional signing	A new sign design has been agreed with the Parish Council. The cost of the work is £400. Sufficient funds remain from the previous scheme to fund the sign. A metrocount has been requested for The Dene to enable size and number of large HGV's to be established.		JW
b)	Issue 4363 C283 South Newton. Weight limit and traffic calming	JW to meet with PC on 15/02/2016.		JW
c)	Issue No: 4644 Ansty Various Various traffic management measures	Currently awaiting a response from Tisbury PC regarding the use of Tisbury North on signage. Information has been received and JW will go back to the PC in the next couple of weeks.		JW
d)	Issue 4716 A30 between High St junction and Pembroke Fm. Dropped kerbs	Additional resources have been requested to progress this scheme.		JW
e)	Issue 4790 Causeway Road, Broad Chalke. New footpath.	The CATG agreed to a 50% contribution (£1,000) for a topographical survey on condition that this is matched by Broad Chalke PC (£1,000). Awaiting confirmation from PC that this is acceptable.		PC

SOUTH WEST WILTSHIRE COMMUNITY AREA TRANSPORT GROUP 8 FEBRUARY 2017 ACTION NOTES

6.	Schemes issued to contractors			
a)	High Street, Fovant 20pmh implementation	The works are complete, invoice to be issued on receipt of final account. Issue to be closed.	Agreed	CATG
b)	C368, Quidhampton 20mph implementation	The works are complete, invoice to be issued on receipt of final account. Issue to be closed.	Agreed	CATG
c)	Town Centre, Mere Waiting restrictions	The lining works have been completed, the signing works are outstanding.		JW
d)	Tisbury 20mph implementation	The works are substantially complete, contractor being chased to complete the scheme.		JW
e)	Broad Chalke 20mph implementation	The works are substantially complete, contractor being chased to complete the scheme.		JW
f)	Hindon Traffic Management Measures	The works are complete, invoice to be issued on receipt of final account. Traffic Calming trial still outstanding, JW to chase price.		JW
g)	Issue 4121 Whitlock Rise, Bishopstone. Junction ahead warning signs	The works are complete, invoice to be issued on receipt of final account. Issue to be closed.		CATG
5.	Other Priority schemes			
a)	Issue No: 4629 West Street, Barford St. Martin Bollard to protect thatched roof.	Work will progress when the group make it one of their top 5 priorities.		CATG

SOUTH WEST WILTSHIRE COMMUNITY AREA TRANSPORT GROUP 8 FEBRUARY 2017 ACTION NOTES

b)	<p>Issue 4682</p> <p>Barkers Hill, Semley New width restriction signs.</p>	<p>The group agreed to fund two 'Not suitable for HGV' signs at approx. £500. Donhead St Andrew PC/S&S PC have agreed 25% contributions therefore work will progress when the group make it one of their top 5 priorities.</p> <p>S&S PC discussed at meeting 09/01/17 and have confirmed that warning signs are already in existence and therefore would not necessarily support the above request. They have requested that it is looked at again. I have suggested a formal width restriction that will cost approximately £2000 as it needs a Traffic Regulation Order.</p> <p>DStA PC appreciated that the scheme would cost considerably more due to the necessity for the associated advertising and legal work, but would want to limit any payment from Donhead St Andrew PC to the original £250 offered.</p> <p>S&SPC yet to discuss at their next PC meeting.</p>		S&SPC
c)	<p>Issue 4714</p> <p>Steep Hollow, Dinton One way system</p>	<p>Work will progress when the group make it one of their top 5 priorities.</p>		CATG
d)	<p>Issue 4723</p> <p>B3089, Chilmark New signage to limit HGV's in the village.</p>	<p>Chilmark PC due to discuss at their meeting 11/01/17 and have re-confirmed their support for signage. They comment that the problem is not just vehicles trying to get to EHD but non EHD HGV's have recently got stuck in Becketts Lane and The Cross. They would like a weigh restriction that applies to all HGV's introduced.</p> <p>The group discussed the matter and AD & BW would continue to pursue the matter of EHD. The group agreed that the request for blue and white signs advising of unsuitability for HGV traffic would be considered.</p>		JW
e)	<p>Issue 4787</p> <p>Church Lane, jcn Bridleway Tollard Royal Horse warning signs</p>	<p>Tollard Royal PC having withdrawn their request for signs at the previous meeting have asked for this to be re-considered and confirmed that they will make a contribution of 50% (£375).</p> <p>The group agreed to progress the scheme therefore work will progress when the CATG makes this a top priority.</p>	<p>The group agrees to fund the £750 and PC will contribute 50%.</p>	CATG

SOUTH WEST WILTSHIRE COMMUNITY AREA TRANSPORT GROUP 8 FEBRUARY 2017 ACTION NOTES

6.	New Requests / Issues			
a)	<p>Issue No: 4625</p> <p>C12, Fifield Bavant Traffic Mirror/Signage</p>	<p>The Parish council discussed this matter at their meeting on 14 September and the response is reported as follows;</p> <ol style="list-style-type: none"> 1. The Council does not support any additional signs or a mirror 2. The issue is to be raised in The Ebble to encourage local people to slow down. <p>As no support from PC suggest that issue is closed.</p>	Agreed.	CATG
b)	<p>Issue 4659</p> <p>Wishford Road, Wilton Request for additional speed limit signs and horse warning signs.</p>	<p>A metrocount survey was carried out between 25/09/2016 and 07/10/2016. A total of 10793 vehicles were checked. The 85th percentile was 31.8mph (the 85th percentile is the speed at which 85% of the traffic is travelling at or below). The average speed was 26.2mph.</p> <p>The results do not support that there is a speeding issue along this road therefore suggest that the issue is closed dependant on the feedback from Wilton Town Council.</p> <p>Wilton Town Council agreed that speeding was not an issue but given there was still a couple of drivers that were abusing the speed limit, they requested two horse riding warning signs either end of the road. The group questioned the effectiveness of signs given that the vehicles are likely to be local drivers who know the roads. The Town Council to go back and discuss the funding.</p>		TC
c)	<p>Issue 4689</p> <p>Horwood Farm, A30 Shaftesbury Road, Ansty Request for farm warning signs.</p>	<p>The cost of two signs would be approximately £750 including traffic management. PC requested additional time to discuss the matter.</p> <p>PC have yet to discuss whether or not they support the request. If PC supported the issue then the CATG felt that the landowner should be asked to fund the signs.</p>		PC

SOUTH WEST WILTSHIRE COMMUNITY AREA TRANSPORT GROUP 8 FEBRUARY 2017 ACTION NOTES

d)	<p>Issue 4902</p> <p>Mill Lane, Bishopstone</p> <p>Single track warning signs.</p>	<p>Work will progress when the group make this one of their top 5 priorities.</p> <p>PC stated that they would be prepared to fund the scheme 100% if this was made a priority and could be implemented before May, however the group were not prepared to replace an existing priority scheme with this one to allow works to progress.</p>		CATG
e)	<p>Issue 4949</p> <p>Road between B3089 & A303 Fonthill Bishop</p> <p>Request for SLOW markings or a pinch point.</p>	<p>SLOW markings would cost approximately £100 each if included with other lining in the area, or on its own would incur a standing charge of £1000.</p> <p>A white line pinch point painted on the carriageway would cost approximately £500 if included with other lining in the area, or on its own would incur a standing charge of £1000.</p> <p>New lining schemes can not be added to the program of renewals unless a design is pre-approved by the Traffic Engineering team. CATG did not wish to replace an existing priority with this scheme.</p>		CATG
f)	<p>Issue 4964</p> <p>Court Street, Tisbury</p> <p>Speeding Traffic</p>	<p>Perceived speeding along Court Street in Tisbury SP3 6LN - Cherry Cottage and immediately adjacent neighbouring properties.</p> <p>A total of 21709 vehicles were checked. The 85th percentile was 26.2mph (the 85th percentile is the speed at which 85% of the traffic is travelling at or below). The average speed was 21.8mph.</p> <p>Due to the low recorded speed suggest that the issue is now closed.</p>	Agreed	CATG
g)	<p>Issue 4991</p> <p>Morrison Avenue</p> <p>Request for pedestrian/horse warning signs.</p>	<p>Tisbury Bridleway 1 at junction with Morrison Avenue and the Nadder Centre. There is a lack of signage where a new public highway crosses a bridleway without any warning that a horse or pedestrian may step into the highway. Morrison Avenue has a 20mph speed limit that is clearly marked as ending just before it crosses the bridleway and enters the Nadder Centre grounds - no speed limit is signed here. Warning signs to alert drivers of pedestrians and horses are required and/or a continuation of the 20mph zone.</p>	The group determined that was not currently a priority and the issue should be closed.	CATG
h)	<p>Issue 5109</p> <p>A30 - Barford st Martin</p>	<p>Some years ago for pedestrian safety bollards were inserted and red tarmac laid down to indicate a footpath. We were told that the road between the corner outside Hill cottage and the old Forge was too narrow</p>	Area Highways Office to investigate the matter and PC to	CATG

SOUTH WEST WILTSHIRE COMMUNITY AREA TRANSPORT GROUP 8 FEBRUARY 2017 ACTION NOTES

	between the junction of the B3089 and Tinkerbell garage.	for anything to be done. Since then the Parish council have had complaints from villagers. The red tarmac has completely worn away and the white line can hardly be seen. Simon Sims our parish steward has remarked that he is surprised there are no warning signs advising traffic that pedestrians could be in the road. He also ensures that when he sweeps or weeds the path he has another steward to protect him from traffic. I have photographs	bring photos back when road has been cleaned.	
7.	Other items			
a)	20mph speed limits	<p>CC thanked the group for the 20mph in both Fovant & Quidhampton. Their residents feel much safer walking along the roads. Tollard Royal PC don't feel that the 20mph works.</p> <p>The group agreed that two schemes would be selected to go forward each year. The PC requesting the scheme will fund £1000 towards the initial £2500 cost of the feasibility study. CATG will fund the £1000 for the legal costs and the PC to fund the construction cost.</p>		CATG
b)	Freight Assessment and Priority Mechanism (FAPM)	<p>The CATG is requested to select its two freight priorities from the below list of freight requests:-</p> <ul style="list-style-type: none"> • C12 Stratford Tony Road • C277 Teffont Magna • C12 Bishopstone • B3089 Dinton • A30 Brook Hill, Donhead St. Andrew • A30 Shaftesbury Road, Wilton • C320 Stratford Tony towards Salisbury Racecourse/A3094 • C295 Donhead Hollow near Ludwell • Dennis Lane, Ludwell <p>These will then be assessed using the Freight Assessment and Priority Mechanism (FAPM) to determine the top two freight priorities in the County which will be investigated in order to identify appropriate freight management measures.</p>	<p>The group agreed to put forward the scheme for a VAS on the A30 at Brookhill as a substantive bid for next year and committed £10,000 from next years funds.</p> <p>B3089 & C12 to go forward for assessment.</p>	SD

8.	Date of Next Meeting: 19 April 2017 14:00-16:00 Nadder Centre, Weaveland Road, Salisbury SP3 6HJ

South Western Wiltshire Community Area Transport Group

Highways Officer – Julie Wharton

1. Environmental & Community Implications

1.1. Environmental and community implications were considered by the CATG during their deliberations. The funding of projects will contribute to the continuance and/or improvement of environmental, social and community wellbeing in the community area, the extent and specifics of which will be dependent upon the individual project.

2. Financial Implications

2.1. All decisions must fall within the Highways funding allocated to South Western Area Board.

2.2. If funding is allocated in line with CATG recommendations outlined in this report, and all relevant 3rd party contributions are confirmed, Southern Wiltshire Area Board will have a remaining Highways funding balance of **£1379**

3. Legal Implications

3.1. There are no specific legal implications related to this report.

4. HR Implications

4.1. There are no specific HR implications related to this report.

5. Equality and Inclusion Implications

5.1 The schemes recommended to the Area Board will improve road safety for all users of the highway.

6. Safeguarding implications

6.1 There are no specific safeguarding implications related to this report.

Report to	South West Wiltshire Area Board
Date of Meeting	08/03/2017
Title of Report	Community Area Grant funding

Purpose of the report:

To consider the applications for funding listed below

Applicant	Amount requested
Applicant: Tisbury Brocante & Fair Project Title: Display boards for TisburyWest Tisbury Neighbourhood Plan TisPlan View full application	£400.00
Applicant: Wilton Town Council Project Title: Wilton Town Trail and map boards View full application	£3800.00

1. Background

Area Boards have authority to approve Area Grants under powers delegated to them. Under the Scheme of Delegation Area Boards must adhere to the [Area Board Grants Guidance](#)

[The funding criteria and application forms](#) are available on the council's website.

2. Main Considerations

2.1. Councillors will need to be satisfied that funding awarded in the 2016/2017 year is made to projects that can realistically proceed within a year of it being awarded.

2.2. Councillors must ensure that the distribution of funding is in accordance with the Scheme of Delegation to Area Boards.

2.3. Councillors will need to be satisfied that the applications meet the Community Area Board grants criteria.

3. Environmental & Community Implications

Grant Funding will contribute to the continuance and/or improvement of cultural, social and community activity and wellbeing in the community area, the extent of which will be dependent upon the individual project.

4. Financial Implications

Financial provision had been made to cover this expenditure.

5. Legal Implications

There are no specific legal implications related to this report.

6. Human Resources Implications

There are no specific human resources implications related to this report.

7. Equality and Inclusion Implications

Community Area Boards must fully consider the equality impacts of their decisions in order to meet the Council's Public Sector Equality Duty.

Community Area Grants will give local community and voluntary groups, Town and Parish Council's equal opportunity to receive funding towards community based projects and schemes, where they meet the funding criteria.

8. Safeguarding Implications

The Area Board has ensured that the necessary policies and procedures are in place to safeguard children, young people and vulnerable adults.

9. Applications for consideration

Application ID	Applicant	Project Proposal	Requested
2289	Tisbury Brocante & Fair	Display boards for TisburyWest Tisbury Neighbourhood Plan TisPlan	£400.00
Project Description: TisPlan Neighbourhood Plan is nearing its completion. We should like to hold a community consultation event in Nadder Hall to engage with the community re the proposed plan and obtain their feedback before submitting the plan for inspection.			
Input from Community Engagement Manager: The applicant reports that TisPlan is a significant project which will affect the whole community of Tisbury and West Tisbury from now until 2026 and beyond. This is a capital project; the total project cost is under £1,000 and therefore according to the community area grants criteria a 50% contribution is not required.			
Proposal That the Area Board determines the application.			

Application ID	Applicant	Project Proposal	Requested
2282	Wilton Town Council	Wilton Town Trail and map boards	£3800.00
Project Description: Provision of mapboards and leaflets etc in connection with the implementation of the Wilton Town Trail a joint Town CouncilBusiness Chamber project			
Input from Community Engagement Manager: The applicant reports that national and international visitors to the town will be given clear directions to the facilities and attractions on offer including the new			

Town Trail Heritage trail. This will encourage them to stay in the town and use the shops/cafes/restaurants that are available so boosting local trade and the local economy.

South West Wiltshire Area Board previously provided Wilton & District Business Chamber with £14,000 for a two-year project delivery plan, which included £3,000 being ring-fenced for this project. This is a capital project and the applicant has committed to paying 50% of the project cost (including taking into account the £3,000 already provided by the Area Board through WDBC), meeting the community area grant criteria.

Proposal

That the Area Board determines the application.

No unpublished documents have been relied upon in the preparation of this report

Report Author:

Stephen Harris
Community Engagement Manager
01722 434211
Stephen.Harris@wiltshire.gov.uk

